

# WELCOME

## 2023

### Budget Open House

December 1, 2022

#### Agenda

4:30 to 5:30 p.m.	Open house
5:30 to 6:00 p.m.	Budget presentation
6:00 to 6:30 p.m.	Question & answer period

Find more information at  
[whistler.ca/budget](https://whistler.ca/budget)



# Meet your Council



Mayor Jack  
Crompton



Cllr Arthur  
De Jong



Cllr Jen  
Ford



Cllr Ralph  
Forsyth



Cllr Cathy  
Jewett

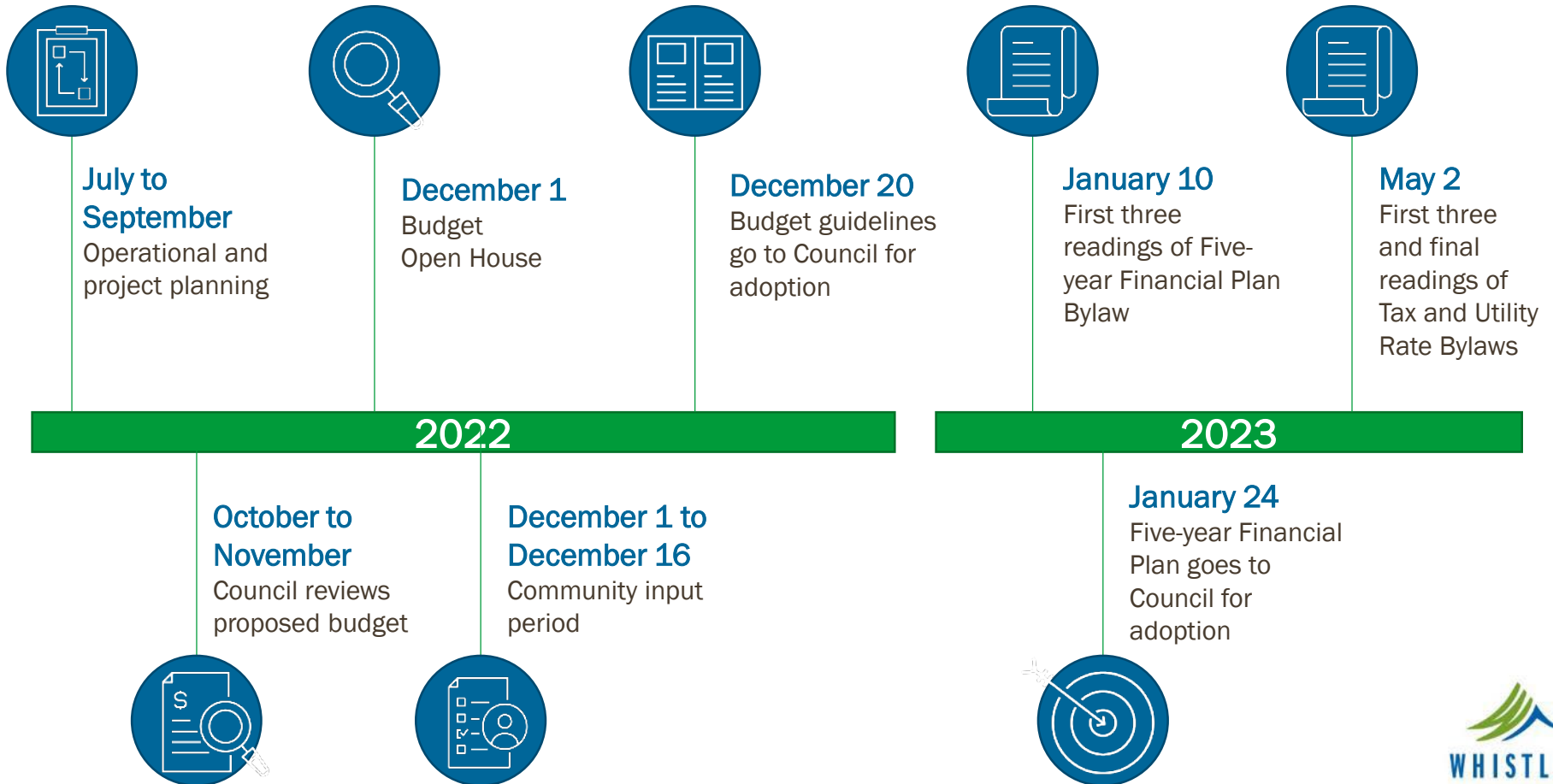


Cllr Jessie  
Morden



Cllr Jeff  
Murl

# Budget Process & Timeline



# Budget Context:

## Factors that influence the budget



### Inflation

British Columbia's consumer price index was 7.8 per cent higher (unadjusted) in Oct. 2022 than Oct. 2021 and the CPI has risen 0.5 per cent monthly from Sept. onward.



### Labour shortages

Wage inflation is high and labour force participation low. In response, the average hourly wage rate in Canada is up 5.2 per cent for the year and 3.9 per cent since May. ~ Bloomberg



### Supply chain challenges

Projects are experiencing cost increases due to inflation and labour challenges. In addition, supply chain issues are pushing prices higher and extending project timelines.



### History of modest tax increases

For 2022, Whistler had the lowest residential mill rate in all of BC.

Between 2012 and 2020, the total amount of tax collected grew 16 per cent, according to LGDE data.

Only six B.C. municipalities >5,000 population have seen slower growth in their total tax revenues over the same timeframe.

This slowly increasing tax revenue has also had to serve a growing number of people. From 2011 and 2021, B.C.'s population increased by 42 per cent, according to Statistics Canada.

\*Municipal governments submit **Local Government Data Entry** forms to the Ministry of Municipal Affairs annually. The information from these forms is reviewed by ministry staff and published on the provincial website.

# Budget Context:

## Why Whistler is different from other communities



### Limited growth & development

Growth management ensures land use and development are effective in preserving Whistler's sense of place, protecting the natural environment, providing a high quality of life and exceptional experiences for visitors. It also means sources of income like Development Cost Charges and non-market change are not as available to offset year-over-year tax growth to the extent they are in other communities.



### Different types of homeownership

We are fortunate to have the Whistler Housing Authority (WHA), which provides and administers secure, affordable housing for those who live and work in Whistler. With this said, purchased WHA housing has appreciated slower than market housing in recent years, resulting in consistent annual *decreases* in municipal taxes on these properties.



### Resort Municipality Initiative funding

Whistler is designated as a Mountain Resort Community by the Province and is eligible to receive RMI funding. This funding helps small tourism-based municipalities build and diversify tourism infrastructure, deliver exceptional visitor experiences and incorporate sustainable tourism practices and products.



### Servicing both residents and resort guests

Many of our community amenities are used by both residents and resort guests. As a result, some of our assets and amenities experience higher usage, require more upkeep and earlier replacement than in less tourist-dependent communities. We are fortunate to have access to RMI funding to assist with offsetting these costs; however, it does not entirely reduce the impact of tourist usage.

# Budget 2023:

## Impact to property tax and utility bills

### 2023 proposed property tax increases

Type of Property and 2023 Assessed Value*	Approximate Tax Increase
Residential \$1,000,000	\$97**
Residential \$4,000,000	\$387**
WHA Residential \$500,000	\$8**

Note: Figures assume the value of those properties rose at the average rate within each class and the allocation of the tax requisition among property classes remains the same.

\*\*Amounts do not include property taxes levied by other taxing authorities as this information is not available as yet. Council does not have control over the amounts collected by other taxing authorities.

The property tax table summarizes the impact of the proposed 8.31 per cent municipal property tax increase on residential and business properties. An 8.3 per cent increase is a half per cent above British Columbia's 7.8 per cent rate of inflation.



### 2023 proposed utility tax increases

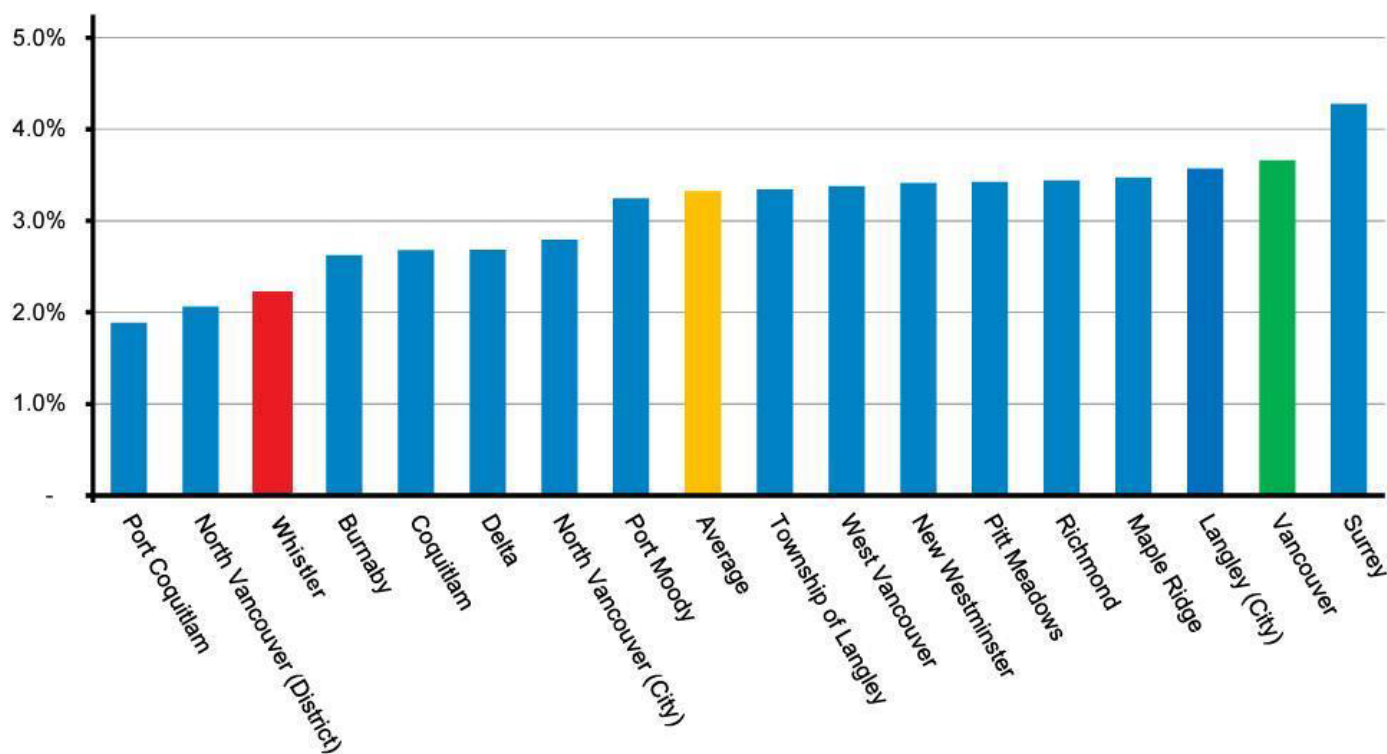
Utility	Proposed 2023 increase	Proposed dollar increase
Water	3%	\$13
Solid waste	4%	\$14
Sewer	5%	\$15

# Budget 2023:

## Tax increase trends

Whistler has provided more than a decade of low tax increases to ratepayers.

### 10-year average annual property tax increase across Metro Vancouver (2013-2022)



# Budget Context:

## What guides budget decision-making

### Corporate Plan

The Corporate Plan is updated annually in June and provides strategic direction to the organization through goals, strategies and actions, as well as performance and progress measurement.

More on the  
Corporate Plan:



### Climate Action Big Moves Strategy

The Climate Action Big Moves Strategy focuses on transportation, buildings, and waste, and articulates the key strategies Whistler will need to further reduce greenhouse gas emissions to meet its targets. The strategy is used as a lens for decision-making on everything to policy to purchasing.

More on Big  
Moves:



### Provincial legislation

Local governments must adopt a financial plan in accordance with the *Local Government Act* and the *Community Charter*. Per legislation, the RMOW must prepare a balanced operating budget where expenditures are equal to revenues.

More on provincial  
legislation:



### Community input

During the input period, community members are encouraged to view the proposed budget and Five-year Financial Plan and provide comments at the public open house and online at [whistler.ca/budget](http://whistler.ca/budget).



# Budget Highlights: Investments

## Climate Action and Environment

- 128 Electric Vehicle chargers
- Energy and Climate Program implementation
- Natural assets management planning
- River of Golden Dreams weir installation (grant funded)
- Continued improvement to transit service

## Public Safety

- Investment in emergency response and wildfire replacement equipment
- Dike monitoring and sediment removals
- Flood plain mapping
- Development of Community Wildfire Defense Plan
- Fuel thinning
- FireSmart program, including Community Chipper Program and Work Days



### Did you know?

For 2023, the RMOW has proposed \$26,942,585 in projects that support the Big Moves Climate Action Plan.



**View the  
Project list:**



(L-R) EV charging station in Day Lot 4, FireSmart Community Work Day

# Budget Highlights: Investments

## Recreation

- Purchase of E-bikes and trailers to support programs run out of Myrtle Philip school
- Whistler Olympic Park Skating Rink equipment replacement
- Equipment replacement for Meadow Park Sports Centre, Spring Creek, Myrtle Phillip and Lost Lake XC



## Parks and Open Spaces

- Rejuvenation of Rainbow Park
- Design enhancement for Meadow Park
- Recreation trail bridge replacements
- Valley Trail improvements
- BearSmart program



(Top to bottom) Meadow Park splash pad, upgraded Valley Trail with solar lights

# Budget Highlights: Investments

## Utilities and roads investments

- Waste Water Treatment upgrades
- Sewer trunk main and manhole lining and repair
- Water capacity improvements and leak detection
- Water source and corrosion protection upgrades
- Alta Vista Road storm system upgrade
- Lorimer Road and Whistler Way road reconstruction
- Transfer station yard improvements, including fire suppression upgrades



(Top to bottom) WWTP secondary clarifier, transfer station at the Callaghan, sewer trunk main lining.



# 2023 Budget:

## Housing planning and funding investments

Council remains committed to supporting affordable, employee-restricted housing development through an agreement with its wholly-owned subsidiary, the Whistler Development Corporation. It will provide additional funding of up to \$5M to WDC employee housing projects from provincial Municipal and Regional District Tax Online Accommodation Provider revenues.

Significant resources have also been committed to improve processes and develop policy to guide additional housing initiatives. These include:

- Building Department application efficiencies project
- Infill housing project
- Working with private developers to ensure new projects include non-market housing elements.

The Planning Department's Land Use Procedures & Fees Bylaw has also been updated to:

- Reduce demand on staff resources
- Improve project timelines
- Weight higher-priority applications and file types, like employee housing



(Top to bottom) Valley Trail in Cheakamus Crossing, construction of Phase 2 buildings in Cheakamus Crossing.



# Investing in Whistler: Grant-in-aid to community groups

In 2022, the Resort Municipality of Whistler (RMOW) awarded \$151,800 to 34 local not-for-profit organizations and societies to deliver 37 programs through the 2022 Community Enrichment Program (CEP). The 2023 budget proposed the inclusion of \$167,000 for the CEP program.

Axemen Rugby  
Whistler Skating Club  
Whistler Gymnastics Club  
Whistler Field Hockey Club  
Howe Sound Women's Centre  
Zero Ceiling Society of Canada  
Whistler Chamber Music Society  
Whistler Mature Action Community  
Pathways Serious Mental Illness Society

Whistler Blackcomb Freestyle Ski Club  
Whistler Institute of Learning Society  
Whistler Community Services Society  
Whistler Sport Legacies Society  
Sea to Sky Community Services  
Whistler Naturalists Society  
Whistler Youth Soccer Club  
Whistler Nordics Ski Club  
Yoga Buggy

Whistler Singers  
BC Luge Association  
Whistler Minor Hockey  
Whistler Mountain Ski Club  
Whistler Multicultural Society  
Community Foundation of Whistler  
Whistler Adaptive Sports Program  
Whistler Valley Quilters Guild Society  
Whistler Farmer's Market

Association of Whistler Area Residents for the Environment  
Whistler Secondary School Scholarship  
The Point Artist-Run Centre Society  
Whistler Sea Wolves Swim Club  
Whistler Slo Pitch Association  
Whistler Sailing Association  
Whistler Writing Society  
Sea to Sky Nordics

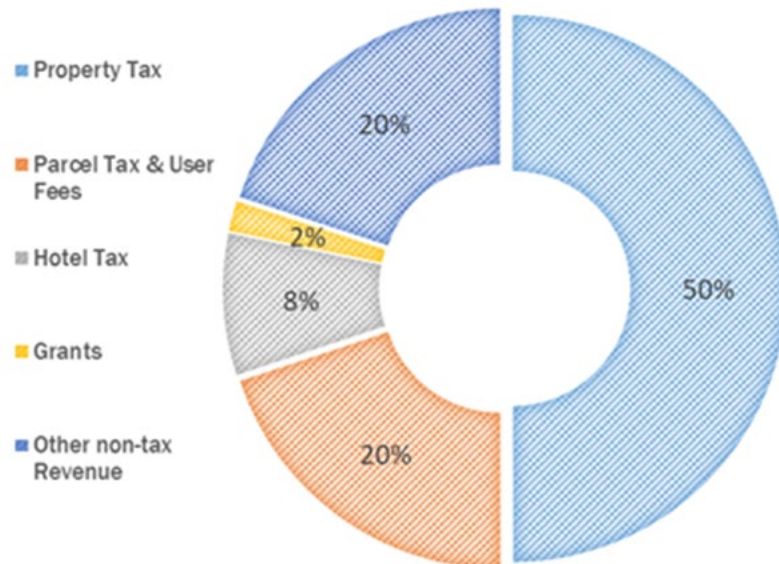


Learn more about the  
Community Enrichment Program

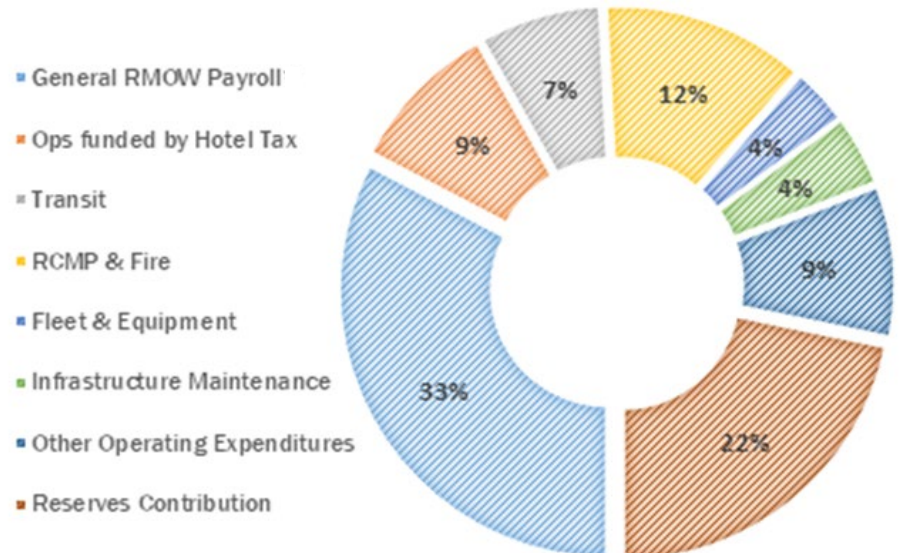


# Municipal Revenue & Expenditures

## 2023 Revenue



## 2023 General Fund Expenditures



# Grant funding: Funding received from external sources

## 2022

Small Communities Grant, Province of BC: \$311,000

Canada Community Building Fund, UBCM: \$289,800

Traffic Fine Revenue Sharing Funds, Province of BC: \$228,500 (funds RCMP costs)

Local Government Climate Action Program, Province of BC: \$128,000

Flood Mitigation Planning, Province of BC and Government of Canada: \$82,700

FireSmart Economic Recovery Fund, UBCM: \$74,600

Public Library Grant, Province of BC: \$51,500

Poverty Reduction Planning & Action: Enhancing Food Security and Resiliency in the Sea to Sky, UBCM: \$50,000

Library, COVID-19 Relief & Recovery, Province of BC: \$39,100

Improving Asset Management Systems, Federation of Canadian Municipalities: \$34,300

Childcare Grants (for Kids on the Go Program), Province of BC: \$29,700

Emergency Operations Centre, Radio Communications Upgrade, UBCM: \$21,500

Healthy Communities Grant, Vancouver Coastal Health: \$20,000

Whistler Public Library, Squamish Lillooet Regional District: \$15,500

Sandbagging Machine, MIABC: \$10,500

Housing Needs Assessment Report, UBCM: \$10,000

## 2023 to date

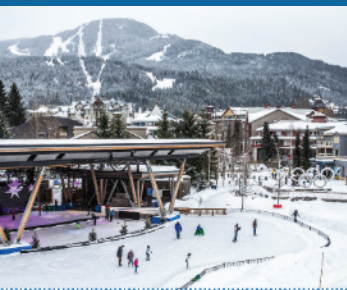
Wildfire Fuel Treatment Program, Government of Canada: \$10.1 million

Strengthening Communities' Services: Community Outreach, Indigenous Ambassador & Temporary Housing Initiative, UBCM: \$110,000



Kids On the Go  
Program at  
Myrtle Philip

# Tourism grant funding



## A quick guide to MRDT and RMI

Visitor contributions to RMOW revenues

The Resort Municipality of Whistler (RMOW) receives two types of funding from the Province of British Columbia to support local tourism:

### MRDT

Municipal and Regional District Tax  
(also known as the Hotel Tax)

EST 1987

### RMI

Resort Municipality Initiative  
Funding

EST 2006

#### How much do we receive?

The amount of MRDT and RMI is based on the number of visitors that stay overnight in Whistler.

MRDT is generated from hotel stays, including online accommodation providers like Airbnb.

RMI is based on the resort community's needs and a calculation that looks at average MRDT revenues and year-over-year changes.



#### How does this impact the RMOW's budget?

RMI and MRDT make up approximately 16.4% of the revenue the RMOW brings in each year.

Property taxes and a variety of non-tax revenues, user fees, license and application fees and grants make up the remainder.

16.4%

### Can MRDT and RMI be spent on anything?

The Province enables MRDT and RMI to be spent on services or infrastructure that directly enhance tourism and the tourism experience, as well as contribute to the provincial economy. The RMOW assembles a plan for each year to determine which projects and investments will be supported through MRDT and RMI, and the Province then approves these plans.

The Province provides MRDT and RMI funding to communities that support significant tourism within the province. MRDT and RMI funding recognizes that local communities can't provide all the services tourists need just from local revenues such as property taxes. MRDT and RMI funding also ensures that a successful and sustainable tourism sector benefits the entire province.

### How is MRDT and RMI spent in Whistler?



MRDT revenue supports projects as well as the recurring Festivals, Events and Animations program.

In 2023, the RMOW's share is budgeted for \$5.5 million. These funds are leveraged to enhance the tourism experience and encourage travel in shoulder seasons and mid-week. Projects funded by MRDT include the maintenance of the Village Stroll; and Park and Village Hosts.



RMI funding goes to infrastructure or services that directly enhance tourism.

In 2023, the RMOW expects to receive \$5.35 million in RMI funding which is being applied to projects and services such as reconstruction of Rainbow Park, design advancement for a rejuvenated Meadow Park, Recreation Trail Bridge replacements, ongoing Valley Trail improvements, Village Shuttle, as well as Bear Smart and Alpine Park Ranger Programs.

\$5.5  
MILLION

\$5.4  
MILLION

2023  
PROJECTED  
FUNDING

### Thank you to the Province of British Columbia

Whistler is fortunate to have MRDT and RMI funding to support our tourism-based economy. This funding supports services that are above-and-beyond what our municipality would otherwise be able to provide.

Only a portion of the hotel tax charged in Whistler comes back into the community through MRDT and RMI transfers – the rest goes into the Province's revenues. The Province in turn uses these revenues to support a wide variety of investments in all communities across British Columbia.

### Want to learn more?

Get full details at [whistler.ca/mrdt](https://whistler.ca/mrdt) and [whistler.ca/rmi](https://whistler.ca/rmi)

