

INTRODUCTION



Meadow Park RePLAY

Overview

Meadow Park was constructed almost 40 years ago and serves a multitude of purposes, not only as a destination park for visitors, but also as an important community and neighbourhood amenity.

The park requires reinvestment to provide long-term climate change resilience, respond to evolving and ever increasing resident and visitor demands, improve public safety, and to address aging and failing infrastructure.

Need for Change

Parks visitation has grown rapidly in recent years, with significant increases noted during summer 2020 and 2021. The pressures on our parks require that they are more robust and accommodate a greater number of visits within the same footprint. There were more than 176,000 visits to four destination parks (Lost Lake Park, Rainbow Park, Lakeside Park and Alpha Lake Park) in summer 2021.

While use levels at Meadow Park have not been studied, this project intends to help address capacity issues at other parks by making Meadow Park more attractive to users.



176,000 Visitors

Funding

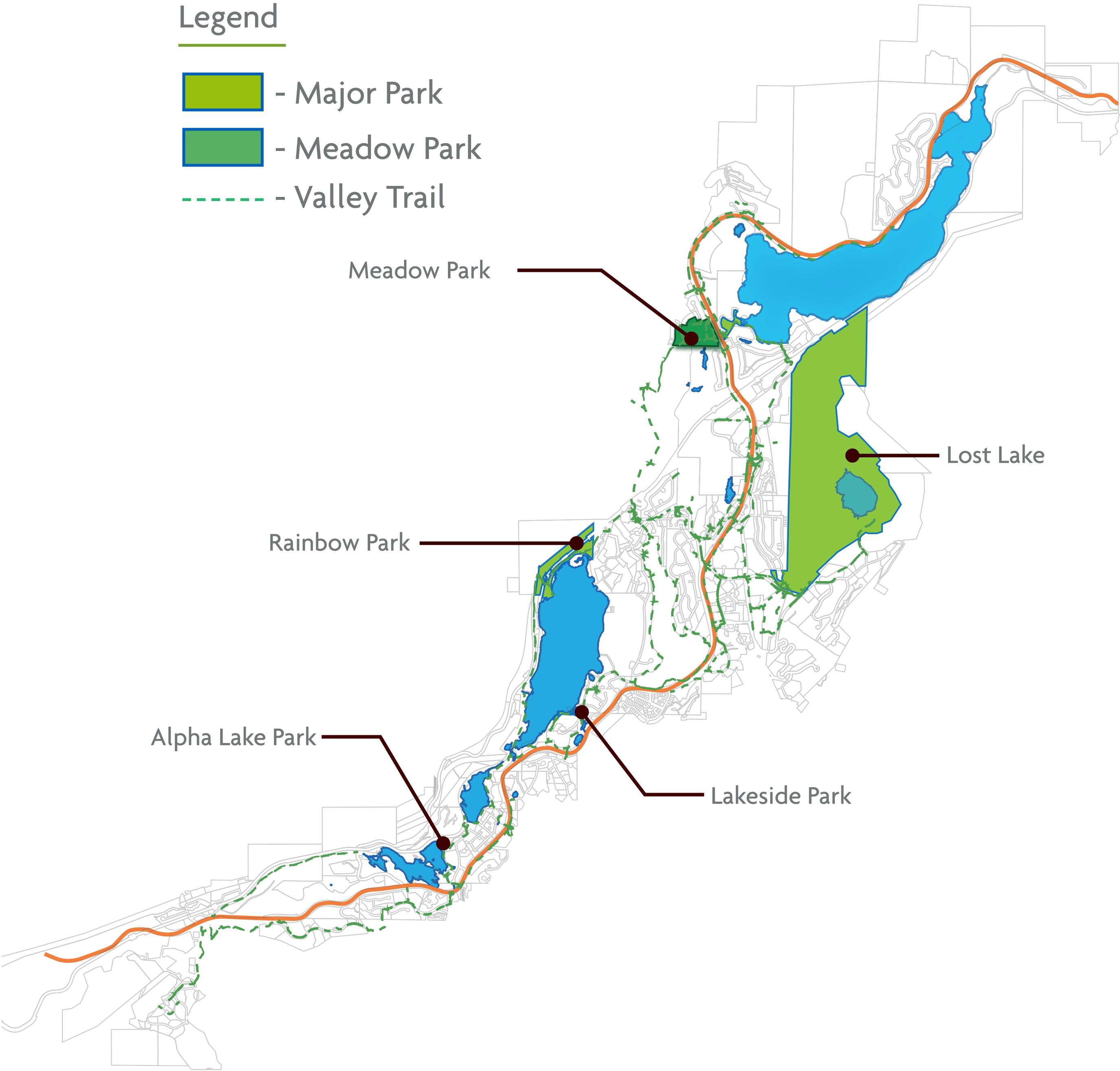
The Meadow Park RePLAY project is 100% funded by the Resort Municipality Initiative (RMI).

Popular Park Mapping

Map showing most popular parks in Whistler with Meadow Park Highlighted

Legend

- Major Park
- Meadow Park
- Valley Trail



Rainbow Park



Alpha Lake Park



Lost Lake



Lakeside Park

INTRODUCTION

Meadow Park Redevelopment

What We Heard Through the 2019 Outside Voice Parks Master Plan

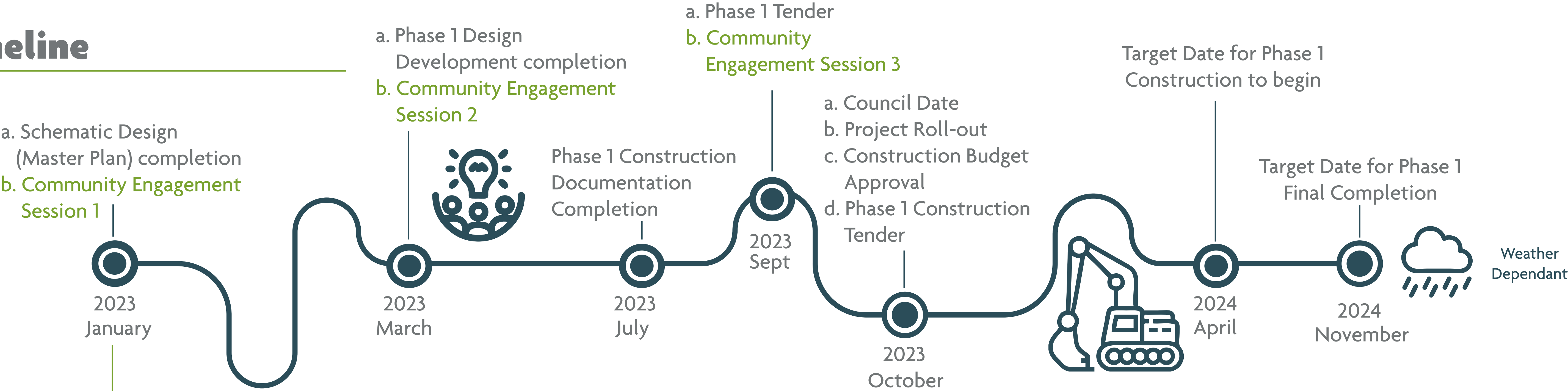


Top “Big Ideas” priorities that emerged through the engagement (over 600 responses)

Phase 1 Site Plan



Timeline



WE ARE HERE Green Text = Public Engagement opportunities

PARK OBJECTIVES

BIG MOVES CLIMATE STRATEGY

WHISTLER'S 5 GOALS:



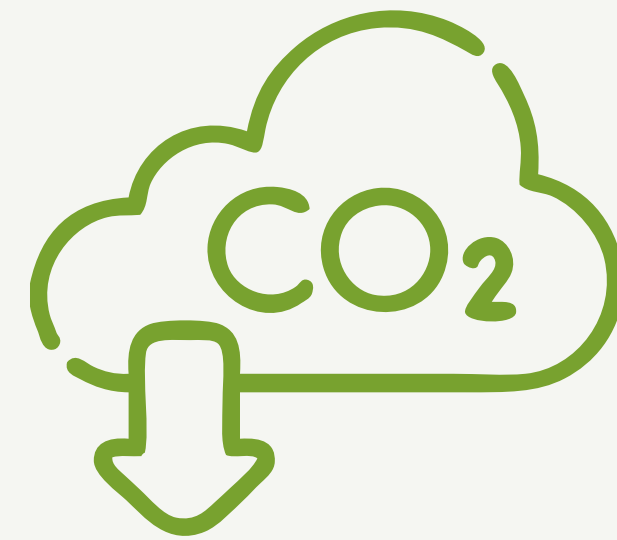
Move Beyond The Car

- Create a diverse park in close proximity to a residential neighbourhood
- Create desirable amenities (spray park, playground, dog park, teen area, etc.) in close walking/biking proximity



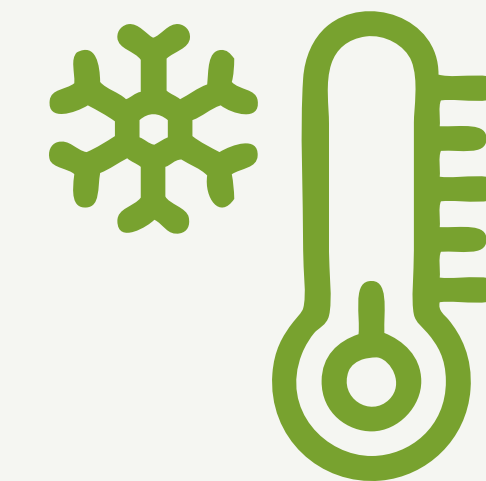
Minimize Threats from Wildfires

- Convert irrigation from potable water to non-potable source to conserve water.
- Use drip irrigation
- Explore water conservation strategies at a new spray park



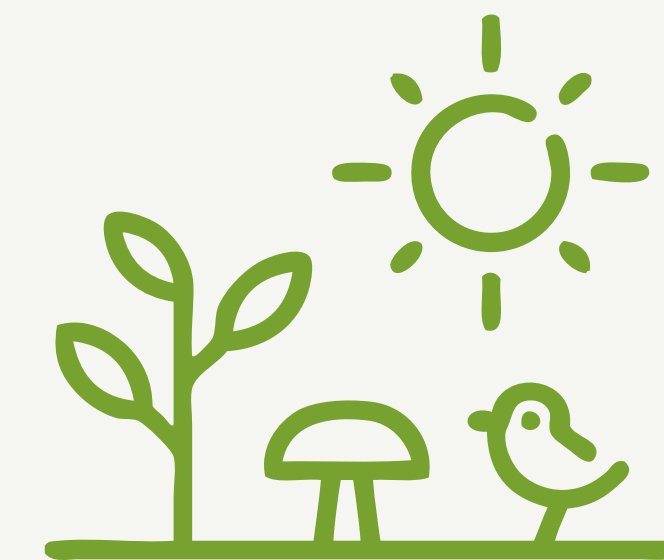
Lower carbon Consumption

- Explore utilizing materials that are robust and durable and that reflect the local context
- Close the loop & shift toward lower carbon consumption



Resilience to extreme Weather events

- Explore seasonal covered outdoor spaces for shade and rain protection.
- Integrate shade trees
- Storm water management
- Design for Flooding



Protect Local Ecosystems and Biodiversity

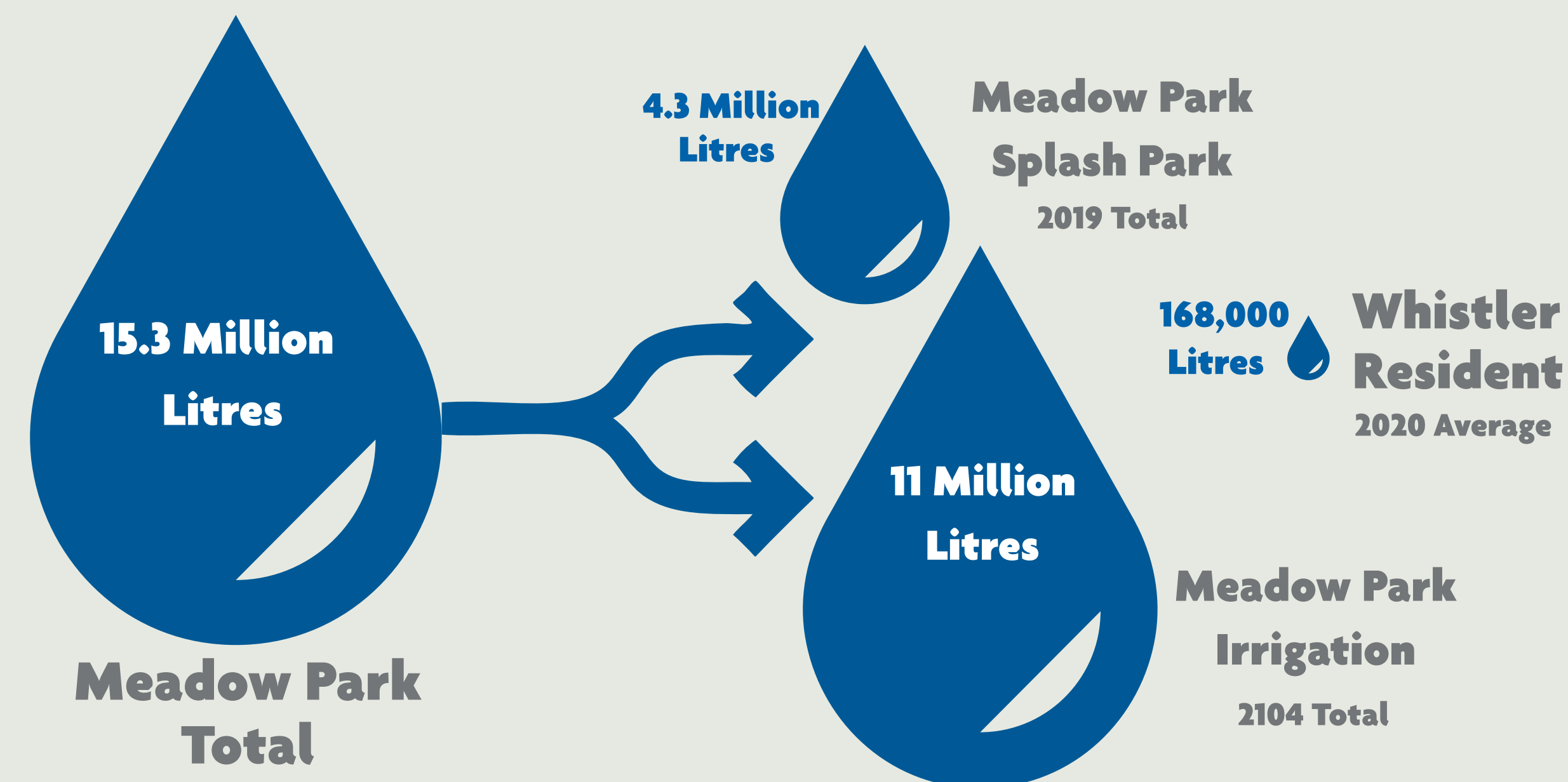
- Revegetating areas along the River to recreate natural habitat
- Reimagining lawn areas
- Create plant areas that are native, drought tolerant, low maintenance

THE VALUE OF WATER



Like many areas in BC, the community's value of water has increased over the last 4 decades. This is due to potable supply limits, costs to supply and treat potable water, environmental concerns (droughts, aquifer depletion), wildfire defense, and ongoing media publicity about water issues elsewhere in North America.

Annual Water Consumption



Whistler's total water consumption in 2021 was 5.02 billion litres or 462 litres/person/day. The total usage saw a marginal increase over 2020, however, per capita usage continued to climb above Whistler's performance target of 425 litres/per person/day due to a slight increase in total usage combined with an increase in average daily population.

Water is one of Whistler's most important assets, supporting natural areas, wildlife, residents and visitors. Using water resources wisely is fundamental to an environmentally responsible approach to living. If you would like to find out more please scan the QR code to the right.



Current Water Usage at Meadow Park Spray Park

Built in the late 1980's, the water for the existing splash park at the site is currently supplied from the municipal potable water system (drinking water) and then drained to an infiltration channel before disposal into the River of Golden Dreams. This type of system is called a flow-through system.

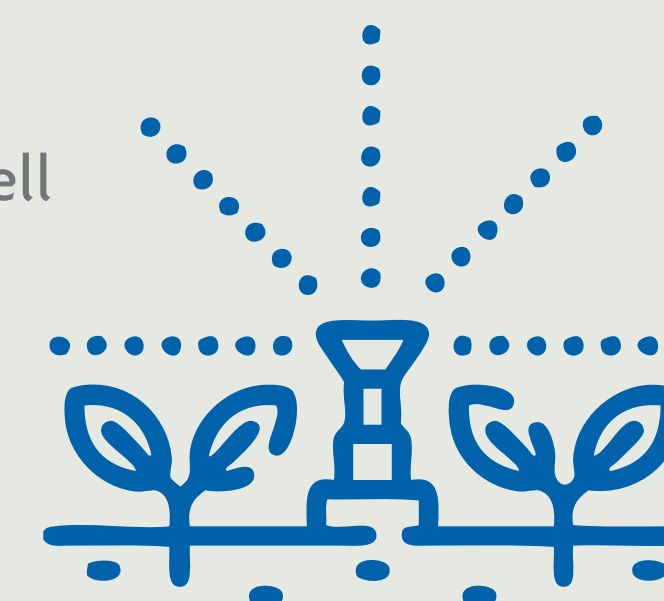


The existing splash park has uses 73 gallons per minute (gpm) or 4.6 liters per second (L/s) with push button activation and a set run time per activation. The annual splash park water usage was approximately 1,152,000 gallons (4,360,794 liters) (4360 m3) per year in 2018 and 2019. To help visualize this amount, it is equal to approximately 9 times the capacity of the large pool at the Meadow Parks Sports Centre.

Water Conservation Strategies

Irrigation

- Summer 2022, installed a test well at Meadow Park
- Will convert irrigation system from potable water to primarily non-potable source to conserve drinking water



Spray Park

- Looking for community feedback on potential water conservation strategies
- Consider spray park system type as well as potential use of waste water



SPRAY PARK

BACKGROUND

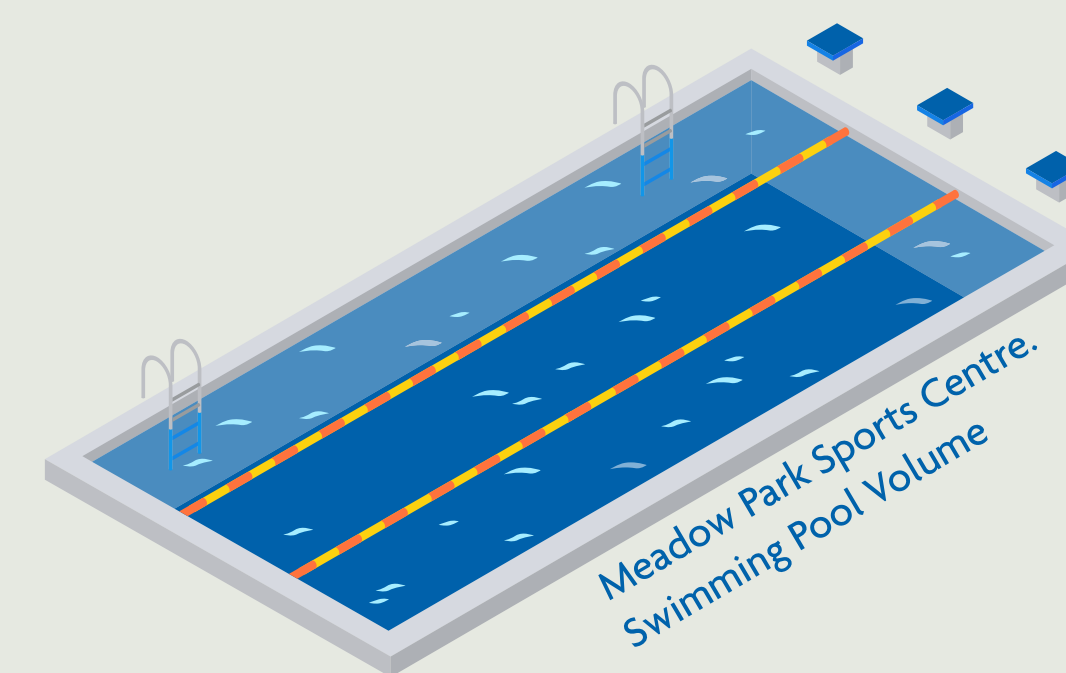
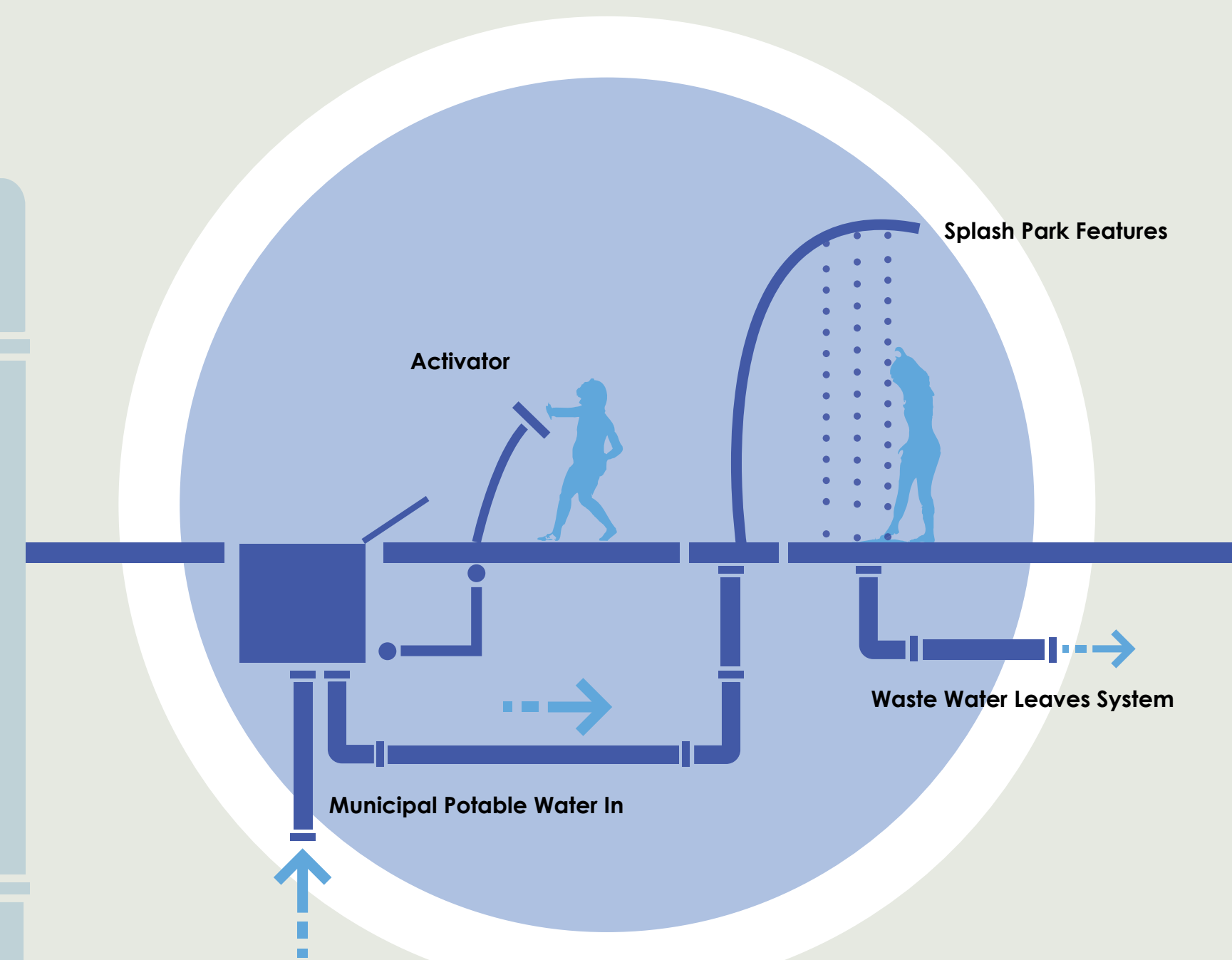
FLOW-THROUGH

Benefits:

- Flexibility in flow-through water disposal can provide some benefits to the surrounding park.
- Lower cost to build and maintain.
- No tanks or chemical treatment.
- Potential short approval process.

Challenges :

- High water usage. Although this can be reduced through low flow nozzles and connection to green infrastructure systems.



x9 /year


WATER USE

4,360,794 liters of water/year



MAINTENANCE

Operational and maintenance costs for a typical flow-through splash park.



CAPITAL COST

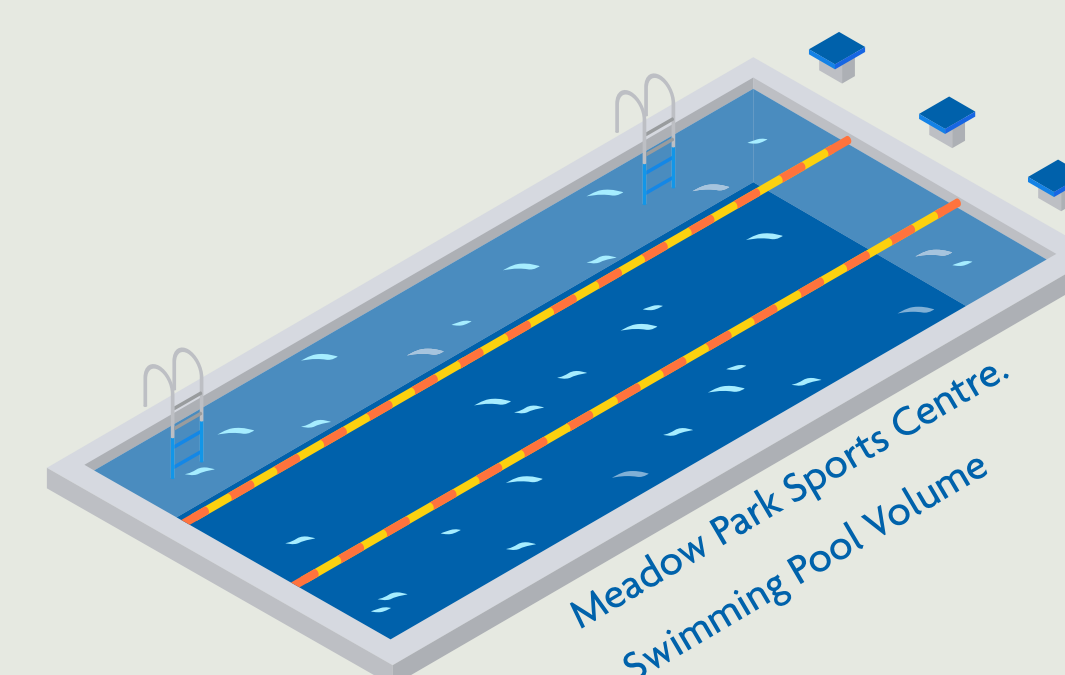
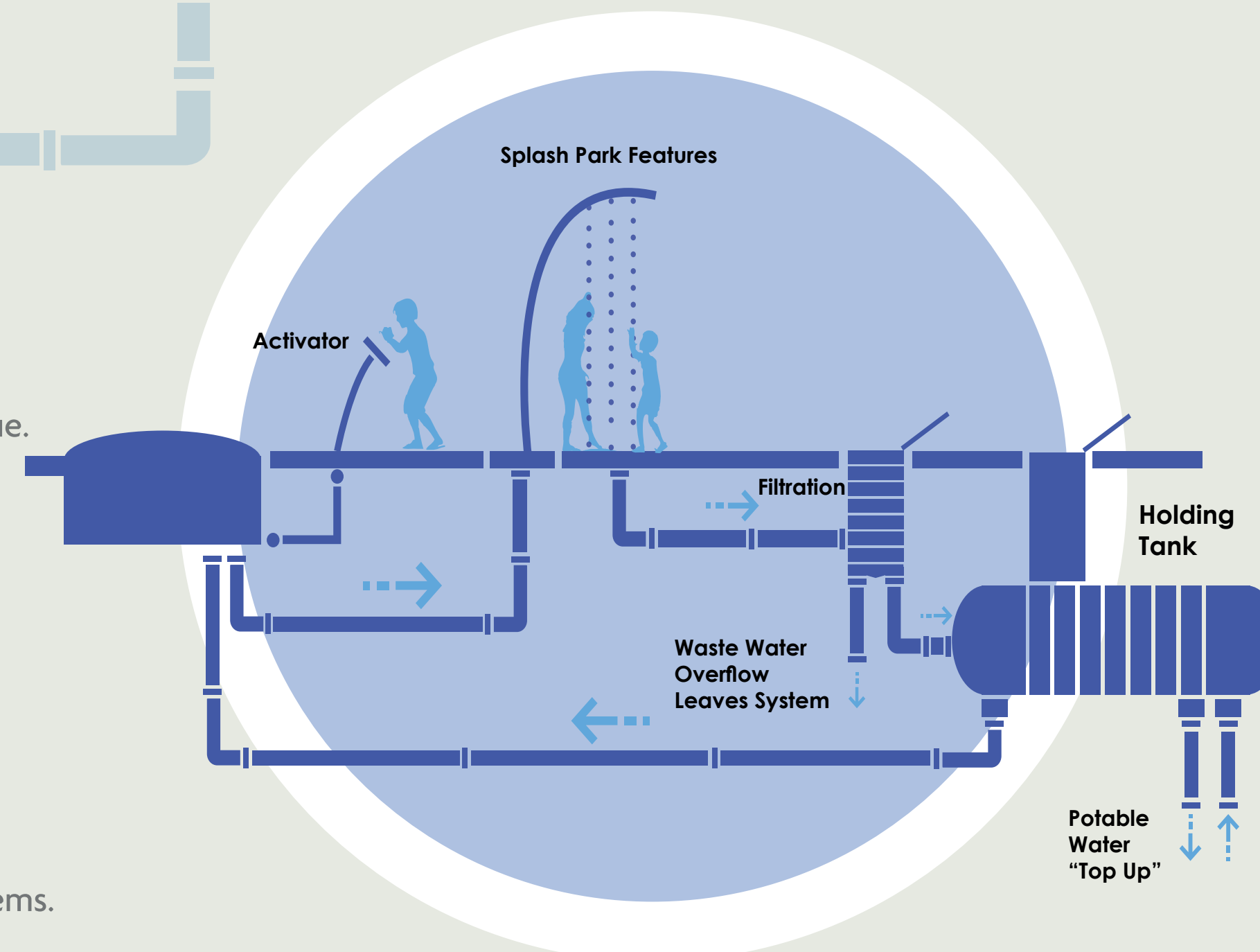
RE-CIRCULATING

Benefits:

- Lower water consumption.
- Increased water output allows for more play value.
- Reduced demand on site services.

Challenges :

- High initial cost.
- Potential elongated approval process.
- Requires small building to store mechanical systems.



x1 /year


WATER USE

Estimated liters of water/year



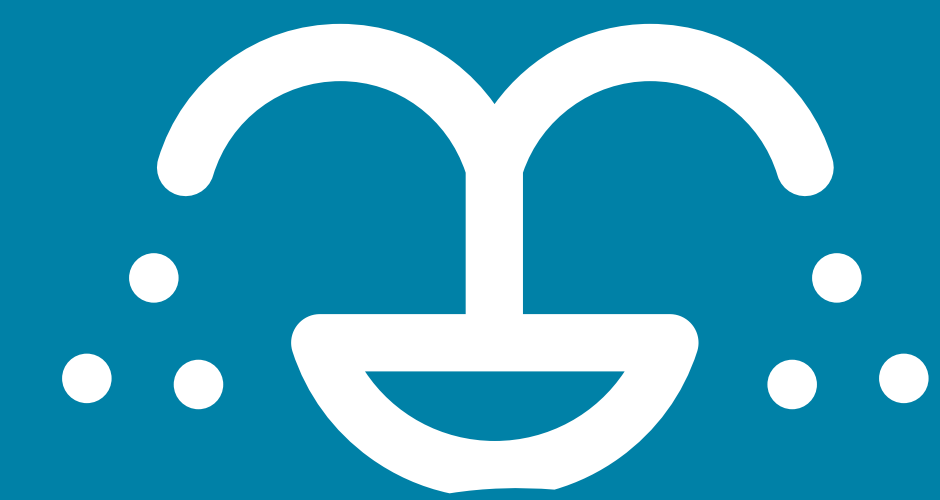
MAINTENANCE

Typical re-circulating splash park including chemical usage.



CAPITAL COST

SPRAY PARK FEATURES & ACTIVITIES



Flow-through System Examples



Interactive water play



Sand and water play

Hybrid system Examples



Cannons



Ground Sprays

Recirculation system Examples



Big Water



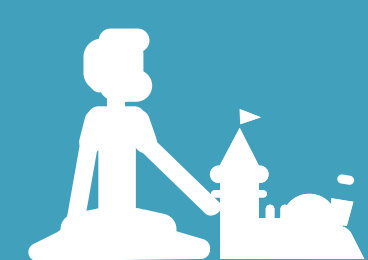
Interactive Fountains

The precedent images shown are for inspiration and to help show how these features could look in the park and inform the design.

The activity icons correspond to stickers located near the large map. We would like you to locate them on the plan where you would like to see these features.

Less Water

More Water



Sand Play



Fog/Mist



Tunnel



Ground Spray



Cannons

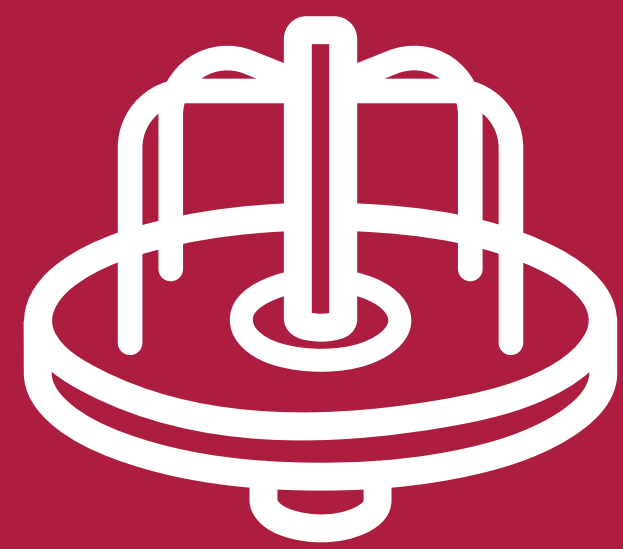


Soak



Interactive Fountain

PLAYGROUND FEATURES & ACTIVITIES



Precedent Images



Nature play



Tower Slides



Shade



Themed Play Structures



Rope Climbing Structures



Zip lines and swinging

Activities



Imagination



Slide



Climb



Swing



Hill Play



Zip Line



Play Structure



Climb Rope

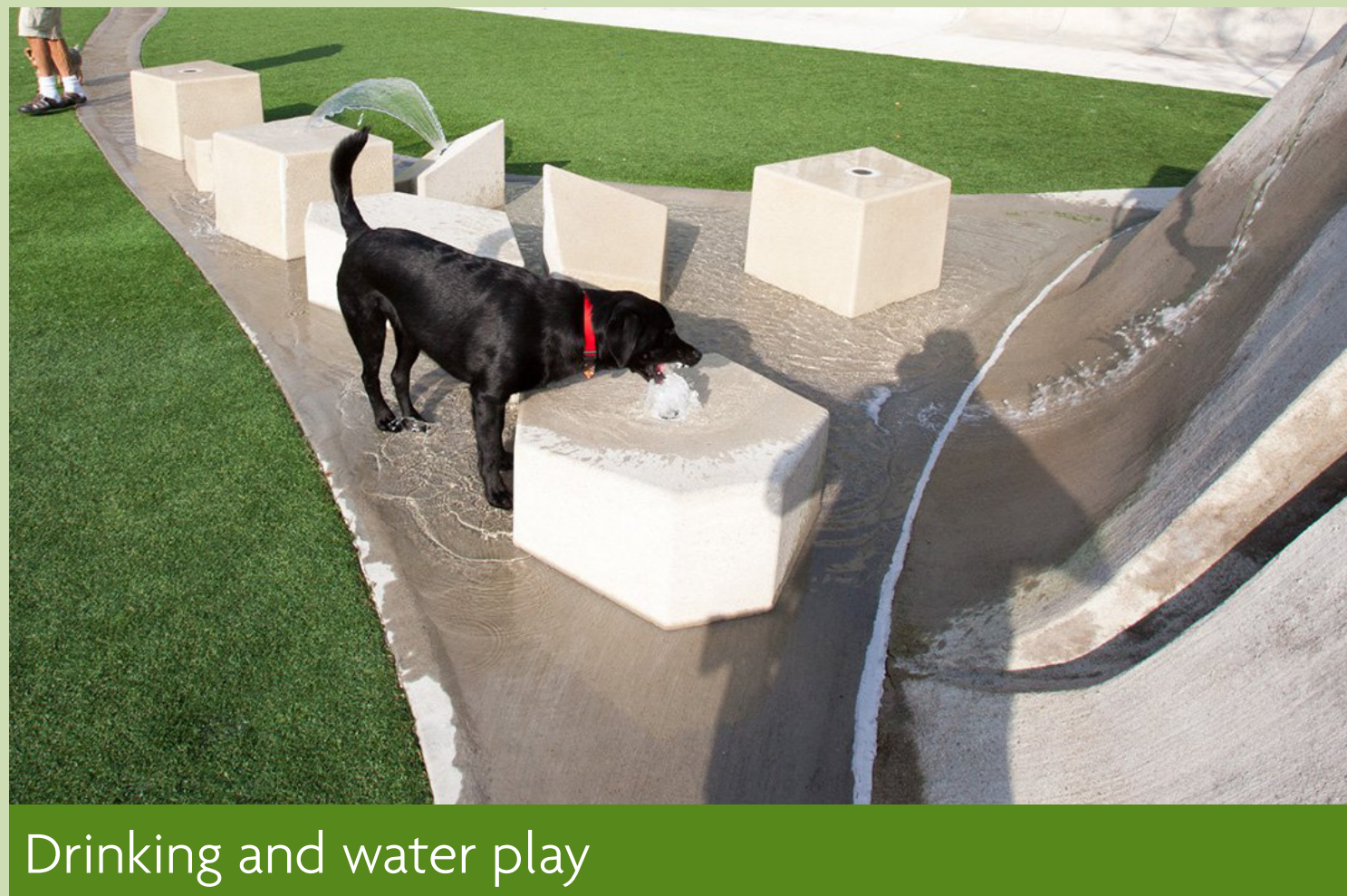
The precedent images shown are for inspiration and to help show how these features could look in the park and inform the design.

The activity icons correspond to stickers located near the large map. We would like you to locate them on the plan where you would like to see these features.

DOG PARK FEATURES & ACTIVITIES



Precedent Images



Activities



The precedent images shown are for inspiration and to help show how these features could look in the park and inform the design.

The activity icons correspond to stickers located near the large map. We would like you to locate them on the plan where you would like to see these features.

TEEN ACTION FEATURES & ACTIVITIES



Precedent Images



Multit-use Courts with Table Tennis



Climbing and swinging structures



Multit-use Courts



Integrated Skate Features



Passive Hangout Spaces



Shade Structures

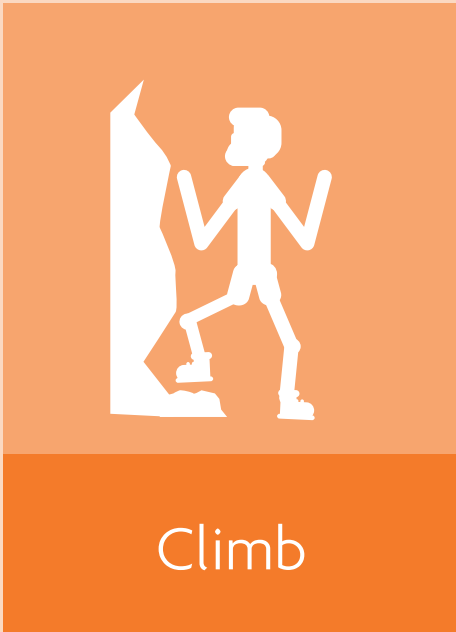
Activities



Skateboard



Bike



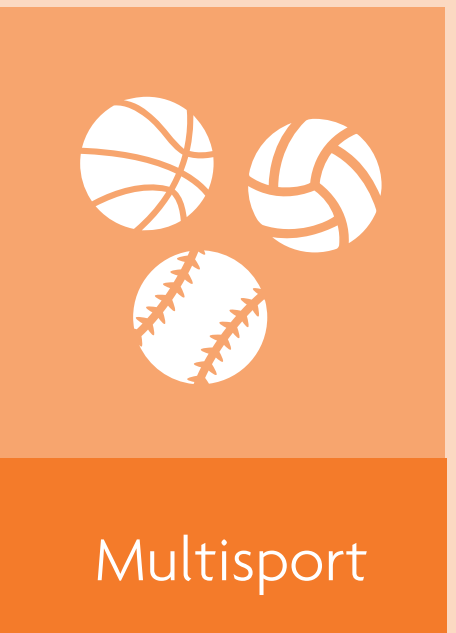
Climb



Scooter



Parkour



Multisport



Shelter

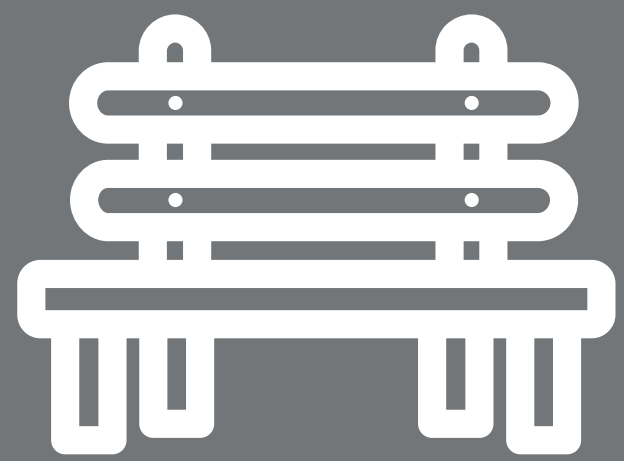


Hangout

The precedent images shown are for inspiration and to help show how these features could look in the park and inform the design.

The activity icons correspond to stickers located near the large map. We would like you to locate them on the plan where you would like to see these features.

PASSIVE FEATURES & ACTIVITIES



Precedent Images



Drinking Fountain with dog bowl



Informal seating



Bookable Spaces



BBQ Spaces



Water Access



Open Space

Activities



BBQ



Bookable Space



Social



Shelter



Hammock



Water Access



Picnic Table



Seating

The precedent images shown are for inspiration and to help show how these features could look in the park and inform the design.

The activity icons correspond to stickers located near the large map. We would like you to locate them on the plan where you would like to see these features.

Meadow Park Layout Plan



Teen Zone

COMMENTS

WRITE YOUR COMMENTS ON A STICKY NOTE AND PLACE IT HERE

Your comments

MUST HAVES

PLACE YOUR MUST HAVE ACTIVITY STICKERS HERE

NICE TO HAVE

PLACE YOUR NICE TO HAVE ACTIVITY STICKERS HERE

Dog Park

COMMENTS

WRITE YOUR COMMENTS ON A STICKY NOTE AND PLACE IT HERE

Your comments

MUST HAVES

PLACE YOUR MUST HAVE ACTIVITY STICKERS HERE

NICE TO HAVE

PLACE YOUR NICE TO HAVE ACTIVITY STICKERS HERE

Park

COMMENTS

WRITE YOUR COMMENTS ON A STICKY NOTE AND PLACE IT HERE

Your comments

MUST HAVES

PLACE YOUR MUST HAVE ACTIVITY STICKERS HERE

NICE TO HAVE

PLACE YOUR NICE TO HAVE ACTIVITY STICKERS HERE

Splash Park

COMMENTS

WRITE YOUR COMMENTS ON A STICKY NOTE AND PLACE IT HERE

Your comments

MUST HAVES

PLACE YOUR MUST HAVE ACTIVITY STICKERS HERE

NICE TO HAVE

PLACE YOUR NICE TO HAVE ACTIVITY STICKERS HERE

Play Ground

COMMENTS

WRITE YOUR COMMENTS ON A STICKY NOTE AND PLACE IT HERE

Your comments

MUST HAVES

PLACE YOUR MUST HAVE ACTIVITY STICKERS HERE

NICE TO HAVE

PLACE YOUR NICE TO HAVE ACTIVITY STICKERS HERE