



WHISTLER

# Meadow Park

Engagement Summary 1



Prepared by

VDZ+A

April 25, 2023

# Table of Contents

---

## P. 4 Engagement Overview

---

## P. 6 In-Person Events

P. 6 What We Heard: Library Pop-up open houses

P. 7 What We Heard: Arena Pop-up open house

P. 8 What We Heard: In Person summary

---

## P. 10 Survey Results

P. 10 Demographics

P. 12 How Often do you Visit Meadow Park

P. 14 How do you get to Meadow park

P. 16 Potential Spray Park Activities

P. 17 Potential Youth Area Activities

P. 18 Potential Playground Activities

P. 19 Potential Dog Park Activities

P. 20 Qualitative Survey Results

P. 28 Next Steps

---

## P. 30 Appendix

# Summary of Engagement

The Resort Municipality of Whistler collected input from residents on what they think of the proposed design for Meadow Park through an extensive engagement period between January 6 to February 5. A mix of in-person pop up open houses and online engagement tools were utilized to get feedback to learn about the public's priority amenities for the park how the new design would fit in to the community, and how current/ new users would envision utilizing the park.







## Get Involved Whistler Online

During the engagement period there was 649 webpage visits to the Get Involved page, with 305 of those participating in the online survey.

---



## Survey Responses

An online survey hosted on Get Involved included a variety of open ended, multiple choice and ranking questions and three pop-up open houses dedicated to community and recreational amenities.

---



## Public Pop up Open Houses

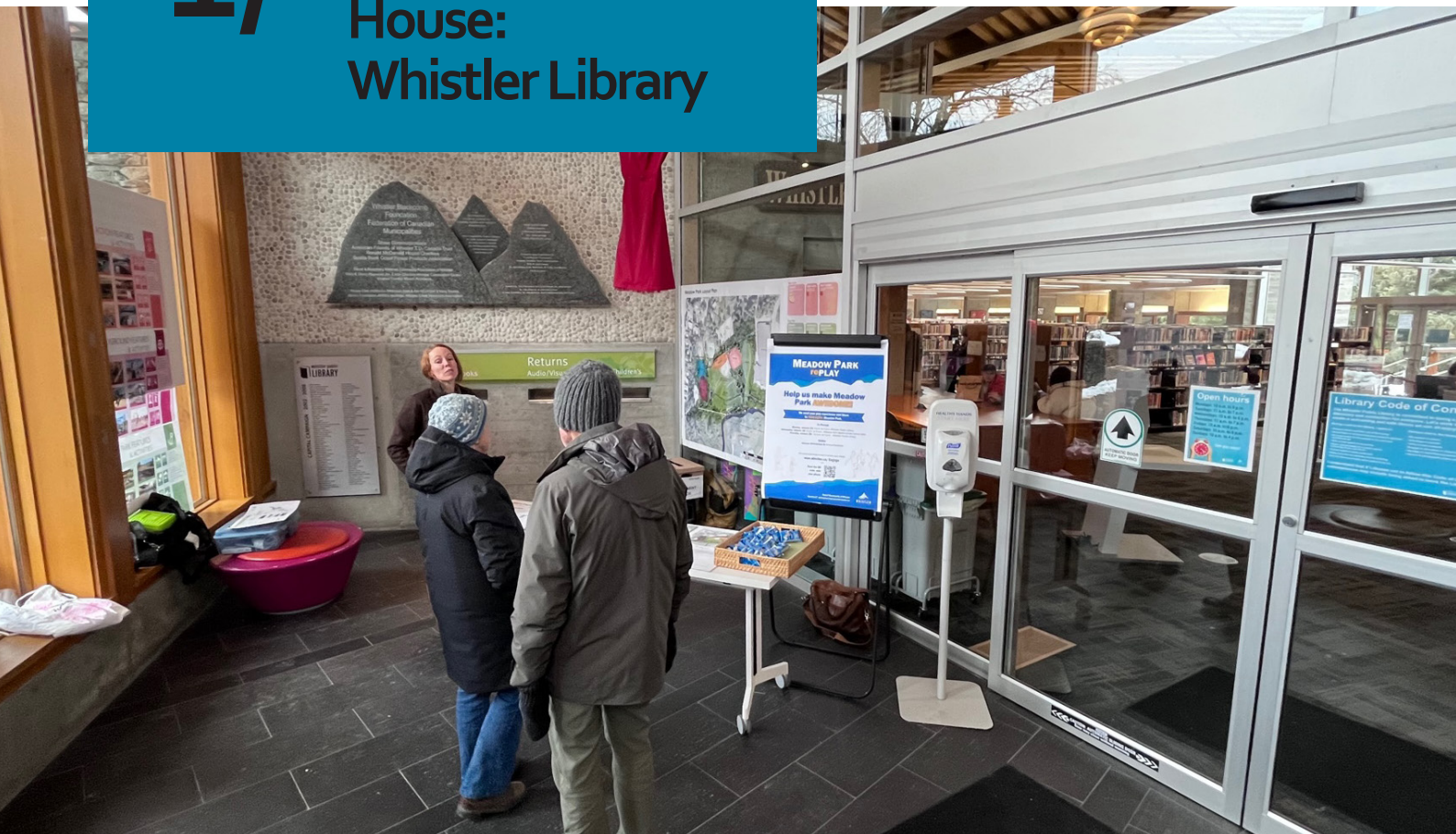
It was paramount that staff heard from the surrounding communities in person, so a team of consultants and municipal park planners visited the Whistler Public Library and Meadow Park Arena over 3 days at 3 separate events.

---



# What we Heard

## 1/ Public Open House: Whistler Library



Date. January 23, 2023  
Time. 02.00pm - 04.00pm

Date. January 26, 2023  
Time. 12.00pm - 2.00pm



Location. Whistler Public Library

## Key Takeaways

- Two pop up open houses at the Whistler Public Library over two dates (see above).
- Over 30 people attended the two events and provided over 25 pieces of valuable feedback. (Post it notes with drawings and writing on the feedback board).
- These events gathered the feedback of a good number of young families.
- Main topics that came up during these pop up open houses include:
  - The need for fenced in space for dogs.
  - A need for additional skateboarding spots in Whistler.
  - The need for a spray park upgrade.

## 2/ Public Open House: Meadow Park Arena



Date. January 25, 2023  
Time. 03.00pm - 05.00pm



Location. Meadow Park Arena

### Key Takeaways

- One pop up open house at the Meadow Park Arena.
- Over 75 people attended the single event and provided over 80 pieces of valuable feedback. (Post it notes with drawings and writing on the feedback board).
- The event gathered the feedback of a large number of children on their way to hockey practice. This was an important avenue to collect data directly from children.
- Main topics that came up during this pop up open houses include:
  - The desire for a pump track in the park.
  - The need for a spray park upgrade.
  - An adequate amount of space for dogs.



# What we Heard

## Feedback Summary

A summary of feedback from all 3 public pop-up open house event in four main areas, the teen zone, off-leash dog area, spray park, and playground. These are the main themes formed from conversations with the public and their input on the map/comment board.

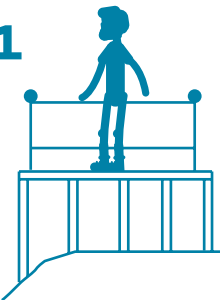
### 1/ Playground

**Main themes:**  
Based on 31 comments  
(sticky notes, drawings,  
and conversations)

Other popular themes  
discussed :

- Zipline (5 mentions)
- Climbing wall (4 mentions)

#1



Play Tower (6 mentions)

#2



Big Slide (5 mentions)

### 2/ Splash Park

**Main themes:**  
Based on 22 comments  
(sticky notes, drawings, and  
conversations)

Other popular themes  
discussed :

- Dump bucket (2 mentions)
- Water pump (2 mentions)

#1



Water Cannons (9 mentions)

#2



Water Slide (5 mentions)



## 3/ Off-Leash Area

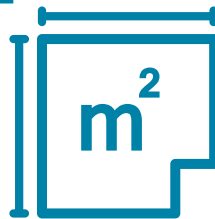
Main themes:

Based on 22 comments  
(sticky notes, drawings,  
and conversations)

Other popular themes  
discussed :

- Water Access (3 mentions)
- Dog Waste Station (2 mentions)

#1



Large Dog Run (6 mentions)

#2



Agility Features (5 mentions)

## 4/ Youth Area

Main themes:

Based on 30 comments  
(sticky notes, drawings, and  
conversations)

Other popular themes  
discussed :

- Parkour (4 mentions)
- Covered Hangout (3 mentions)
- Ball Hockey Area (2 mentions)

#1



Pump Track (7 mentions)

#2



Skate Area (6 mentions)

# Survey Results

## Demographics



Age

38%  
35 to 44

- 29% Ages 45-59
- 18% Ages 18-25
- 14% Ages 25-35
- 1% no answer
- 0% Ages 7-24



Gender

66%  
She/Her

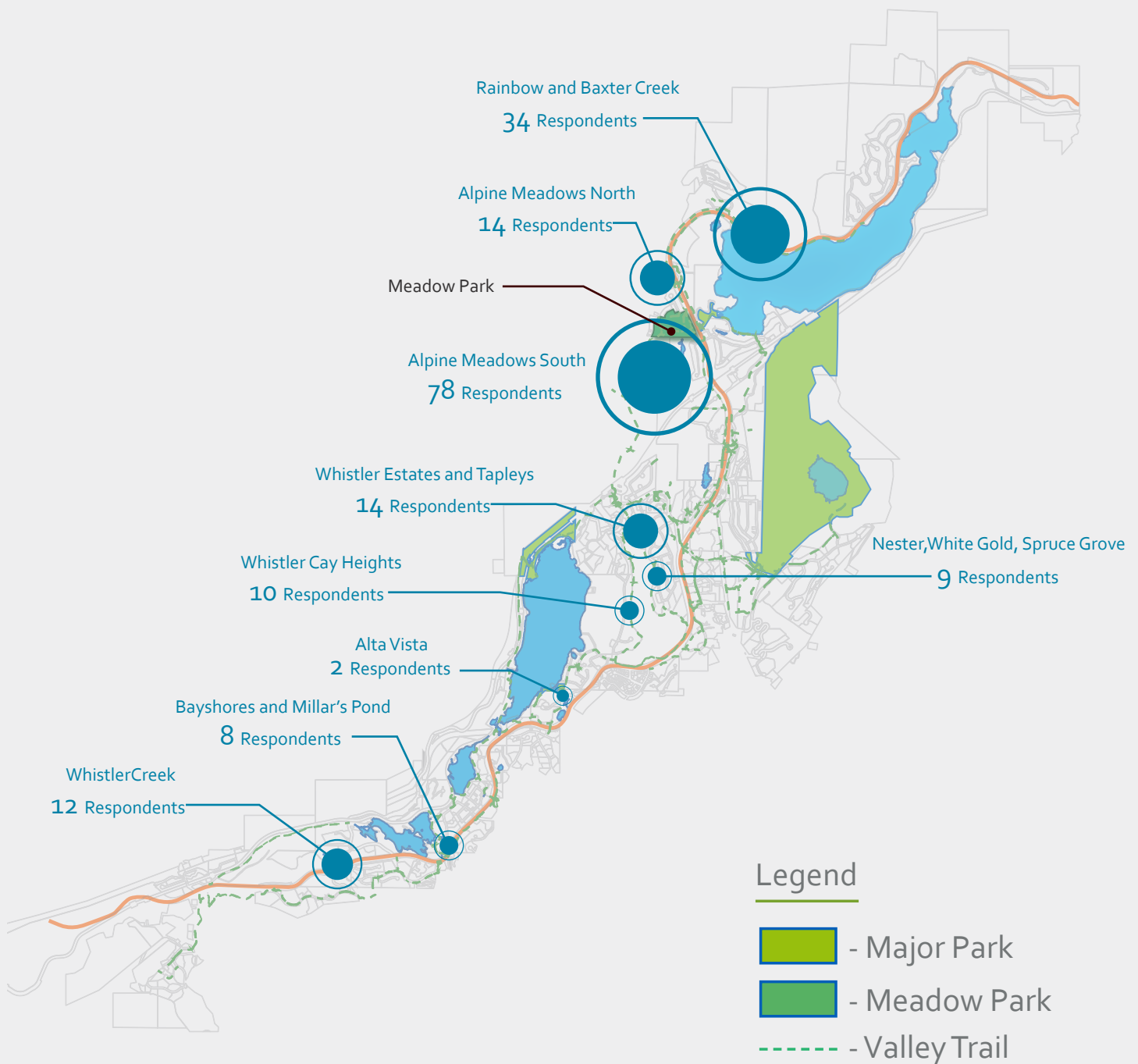
- 29% He/Him
- 3% No Answer
- 2% Other
- 1% They/Them



Primary  
Residence

89%  
Whistler

- 7% Sea to Sky
- 3% Lower Mainland
- 1% No Answer



## Map of Respondents by Area

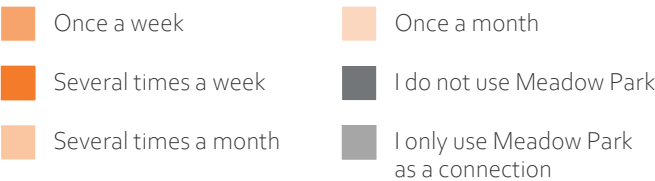
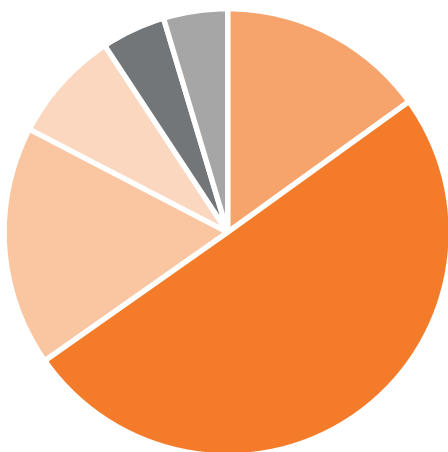
- While the majority of survey respondents live near Meadow Park, there was a mix of respondents who live all over Whistler.
- Please note that not all 305 participants in the survey provided valid addresses or chose to include their address at all.



# What we Heard



## How Often do you visit Meadow Park in the Summer?



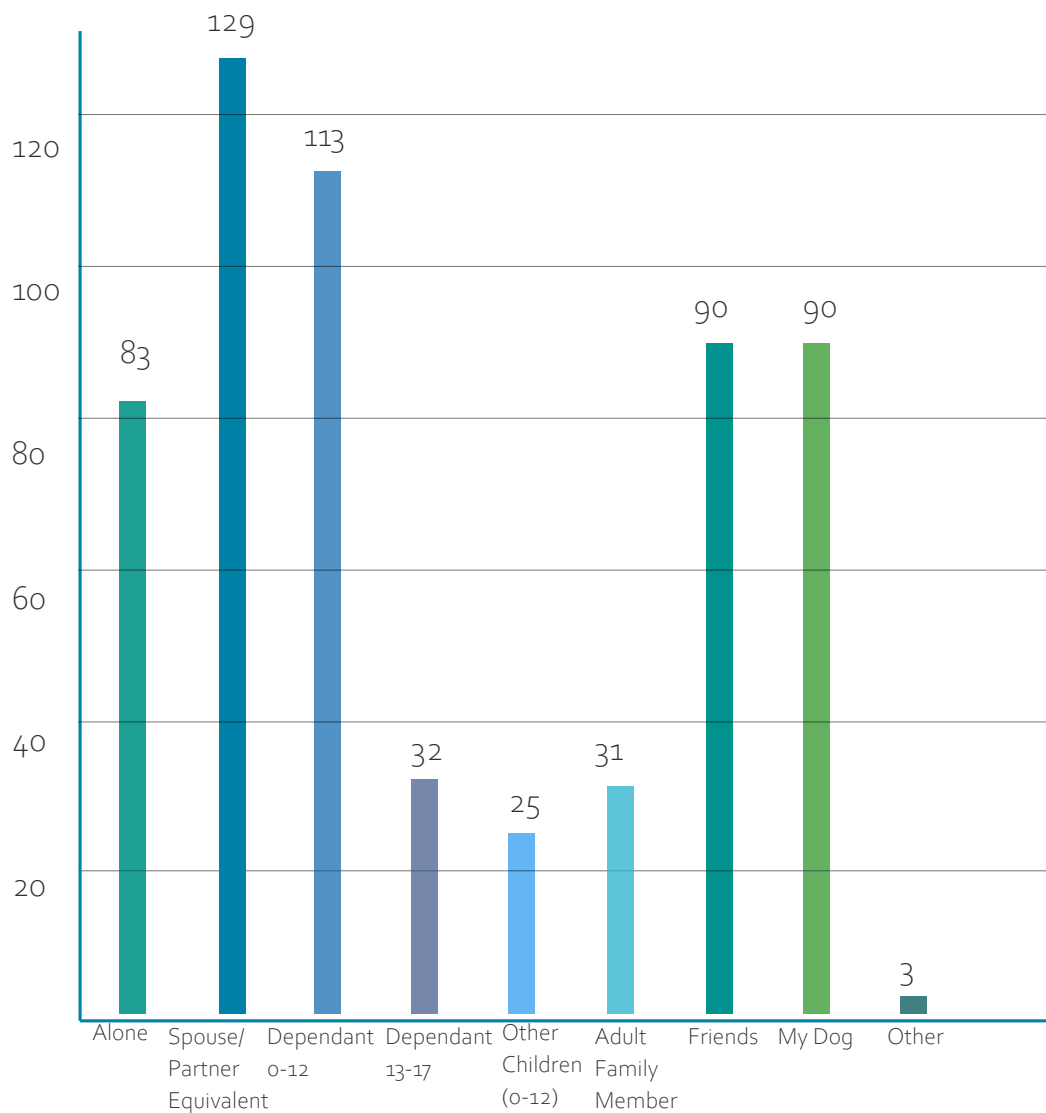
## How Often do you visit Meadow Park in the Winter?



## Key Takeaways

- Park is heavily used during the summer months.
- 5% of respondents used the park more frequently in the winter than the summer (no correlation found by neighbourhood)
- Almost all respondents who frequently use the park in the winter also frequently use the park in the summer (2.4% do not)

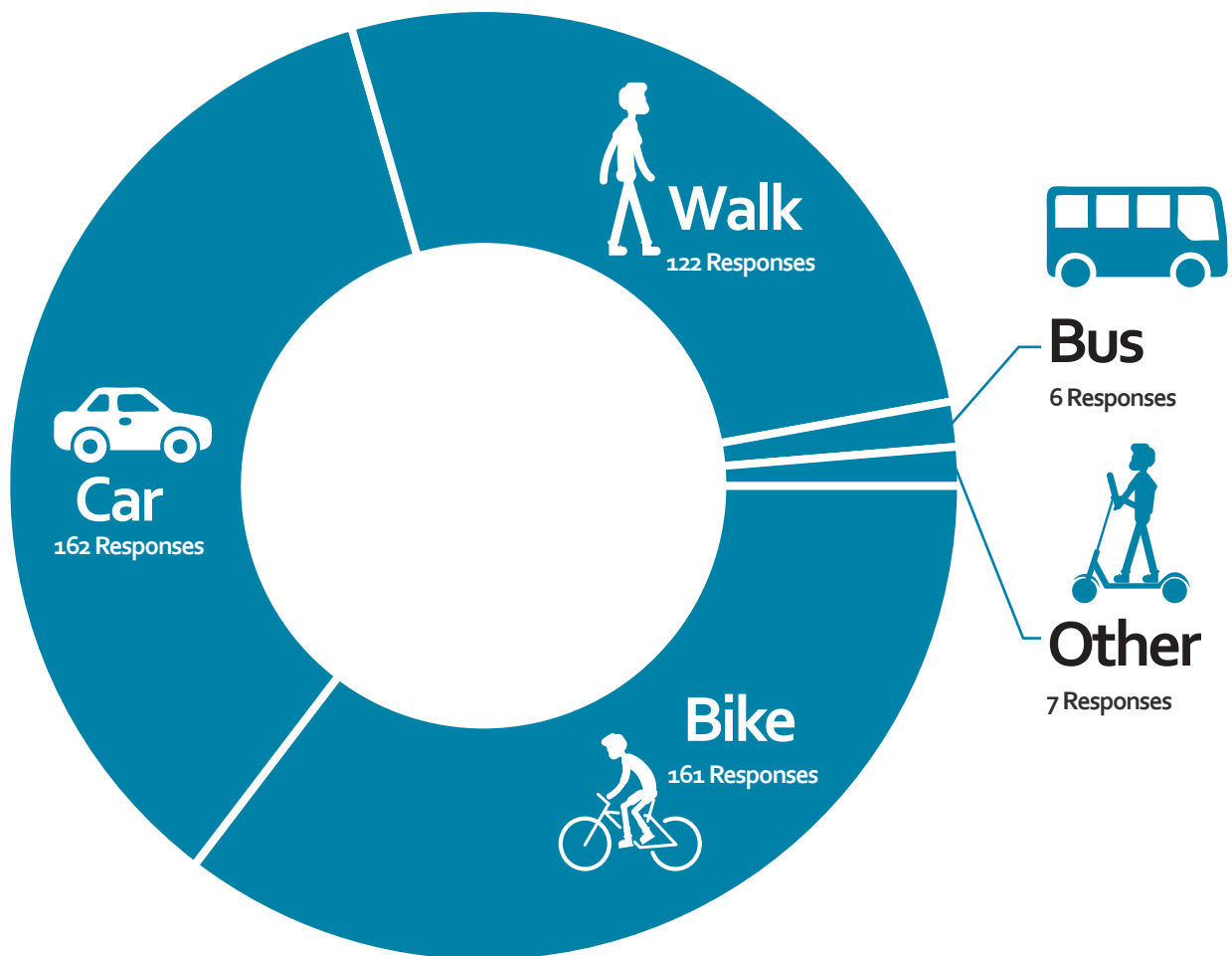
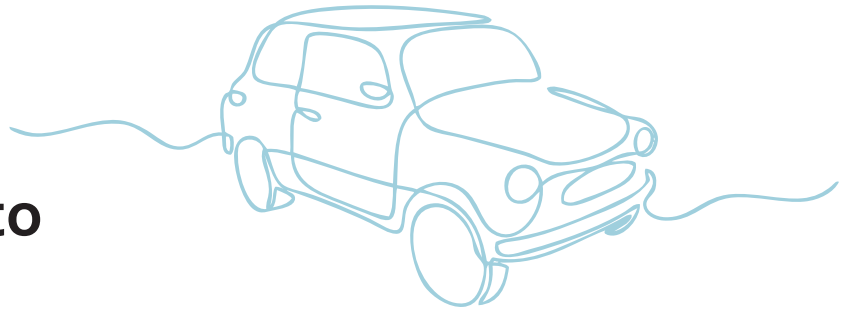
# Who do you visit the park with? (Primary and secondary results)



## Key Takeaways

- The survey respondents who answered alone, make up the highest percentage of people who only use the park as a connection (38% in the winter and 58% of people in the summer).
- No respondents replied that they are visiting the park with other children (non dependent) ages 13-17
- 40% of people who visit the park with their spouse also visit with their children ages 0-12.

# How do you get to Meadow Park?

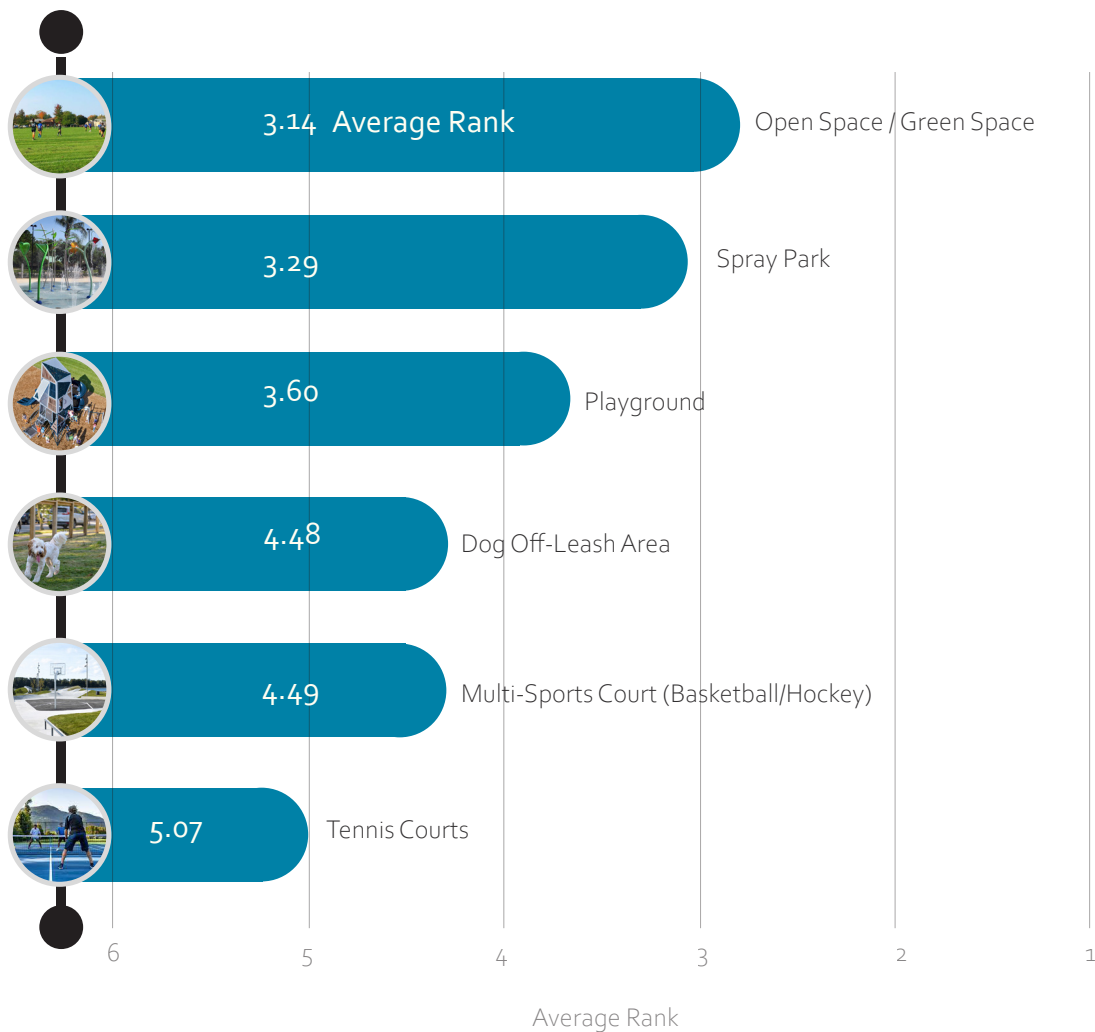


## Key Takeaways

- 304 responses to the question
- 21 respondents take a car, walk and bike to Meadow Park
- 30% of respondents that live 5km away from the park use a bike to get to the park.
- 73% of respondents who walk to the park live in the Alpine Meadows neighbourhood



# Rank your Favourite Proposed Ares in order of Importance



## Key Takeaways

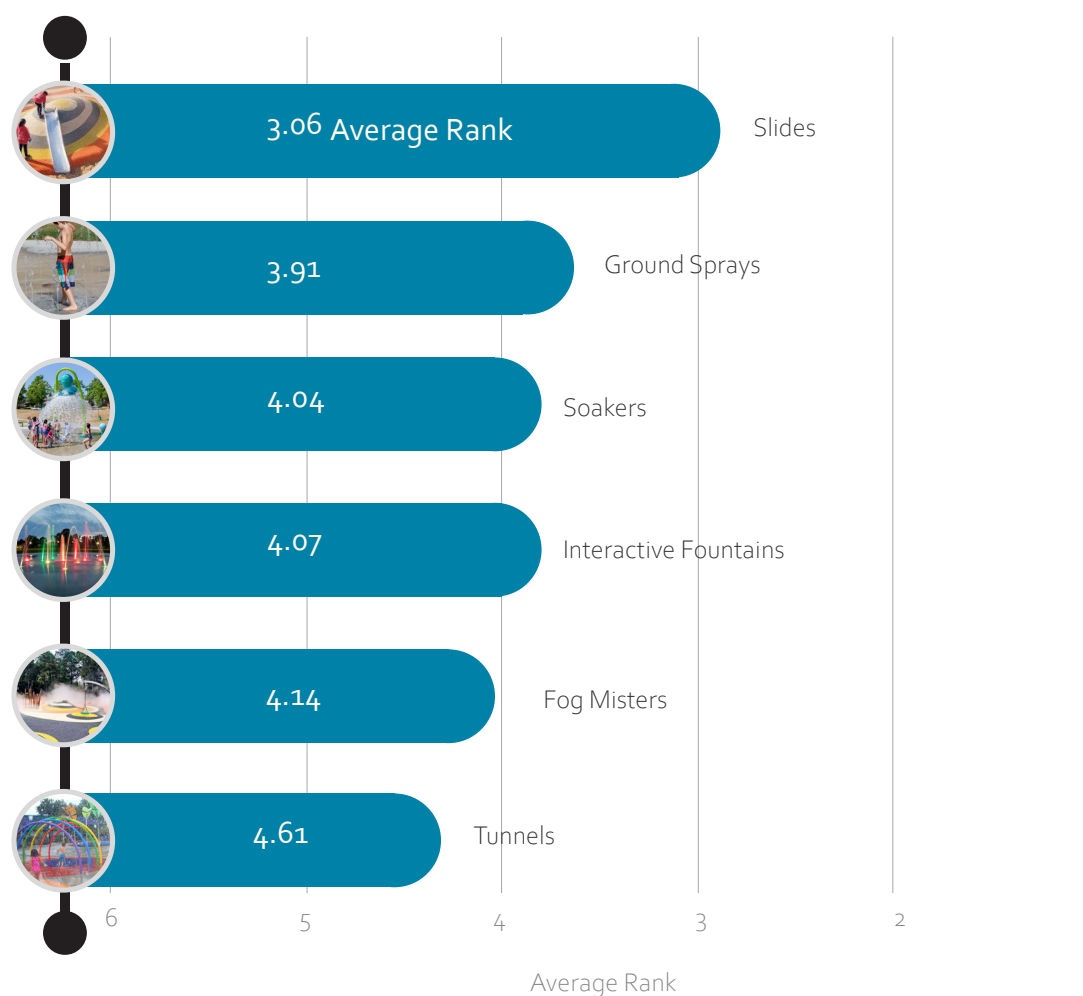
- Not shown on the graph above is ball diamond, public art, and other, all which ranked low, where the majority of people voted them as the 8-10th option.
- Spray parks had the most #1 ranked votes with 81
- Youth Areas, ball diamond, and public art had the highest number of no responses in the category (all well over 100)

The ranking assigned to each activity or area of importance in a survey is referred to as the average rank, with the highest rank being 1 and the lowest rank indicating the least desired activity.

# Potential Spray Park Activities



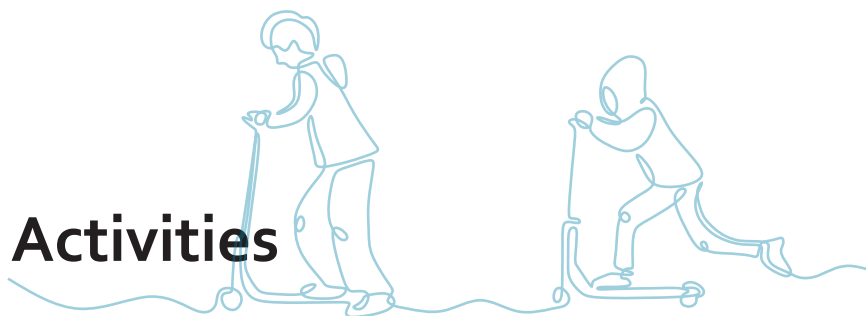
Rank your favourite potential spray park activities that would make the park more enjoyable and functional results:



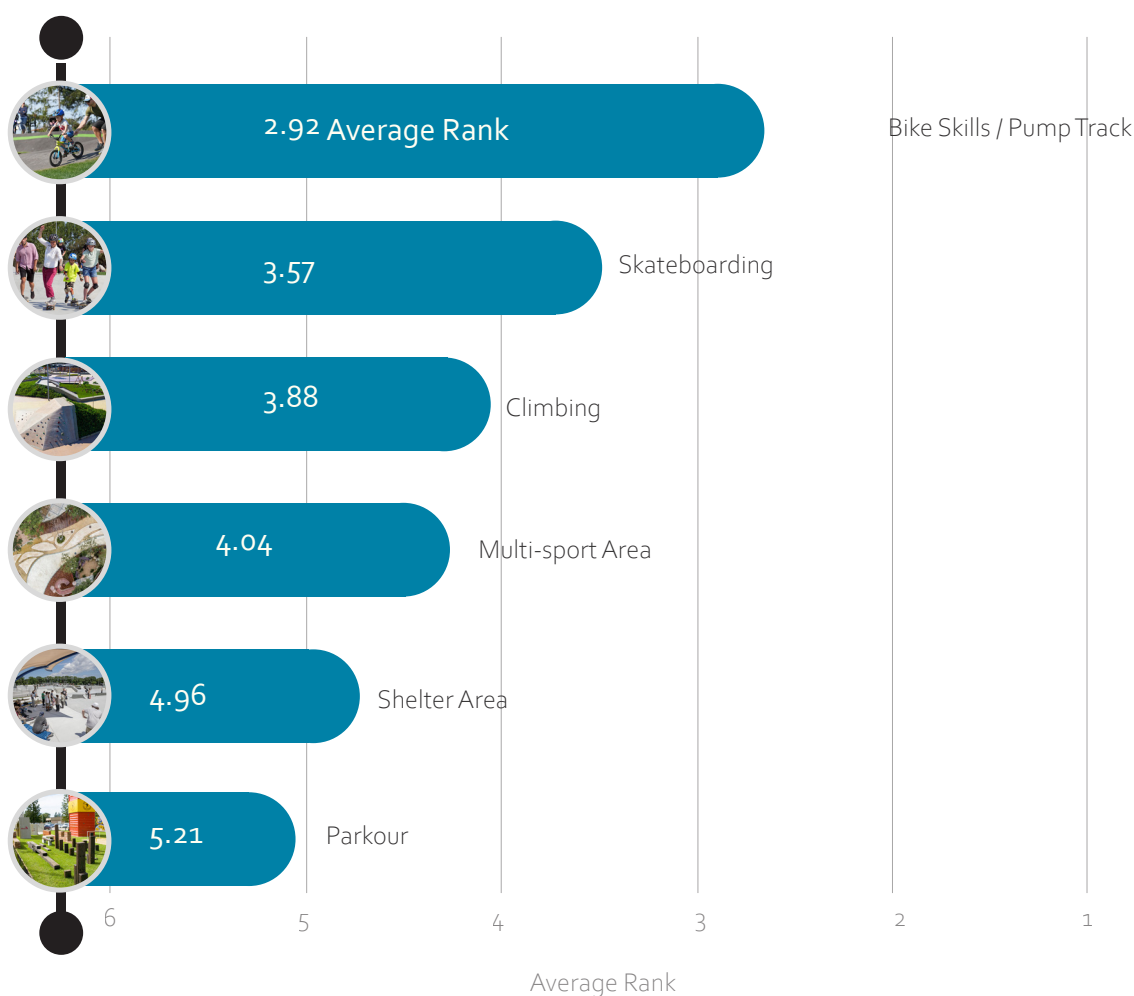
## Key Takeaways

- Not shown on the graph above is sand play , which ranked low , where the majority of people voted it as the 8-10th option.
- Generally , all the features ranked evenly around the 3-4 average range.
- Slides also ranked high in the in-person feedback (the second most mentioned feature there).

# Potential Youth Area Activities



Rank your favourite potential youth area activities that would make the park more enjoyable and functional results:

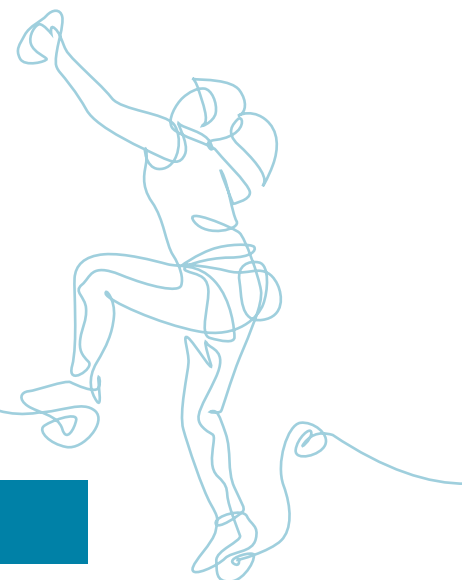


## Key Takeaways

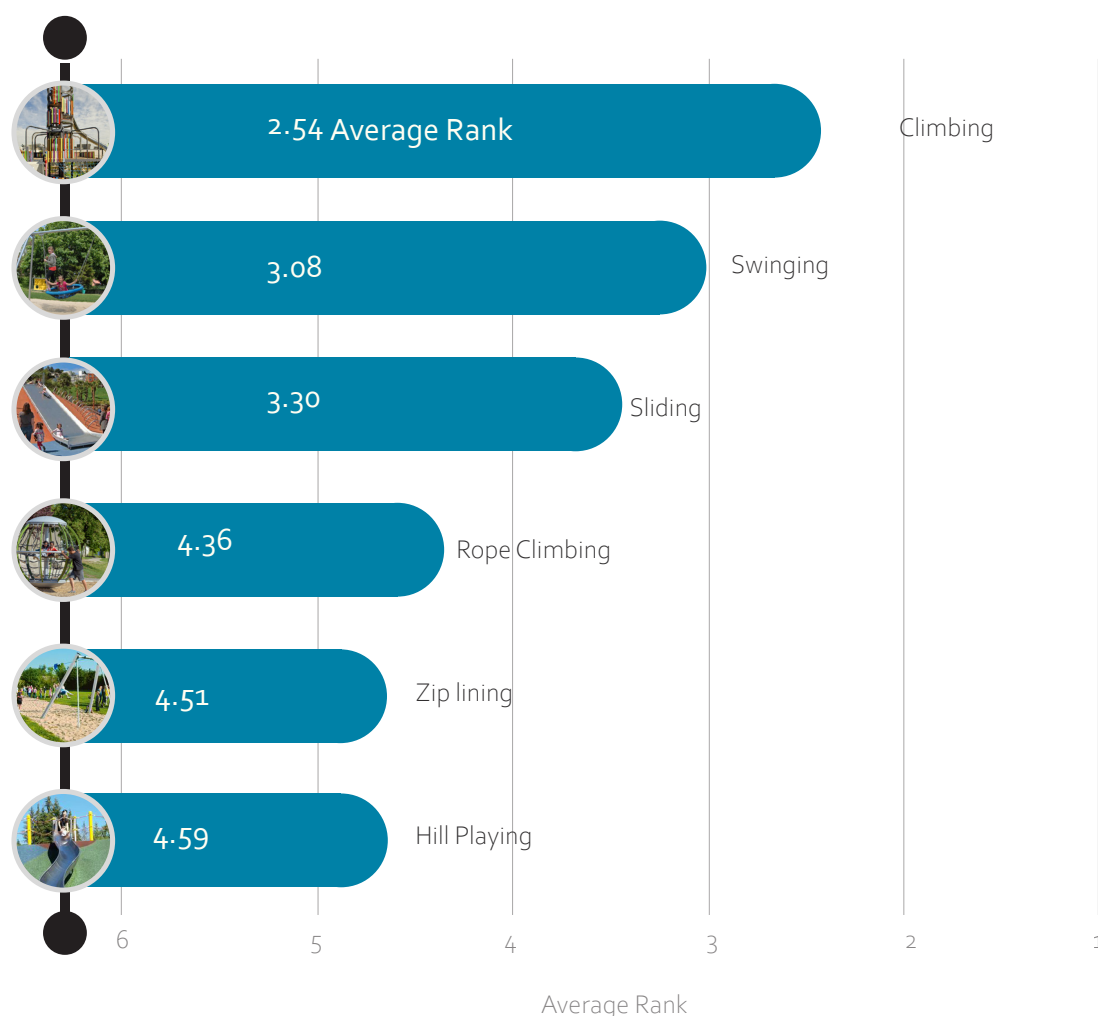
- Not shown on the graph above is table games, hang out spaces, and scooter areas, all which ranked low, where the majority of people voted them as the 7th-10th option.
- Bike skills/ pump track was a large favorite in terms of ranking and votes. This corresponds with the open houses where pump tracks were one of the most talked about features.



# Potential Playground Activities



Rank your favourite potential playground activities that would make the park more enjoyable and functional results:



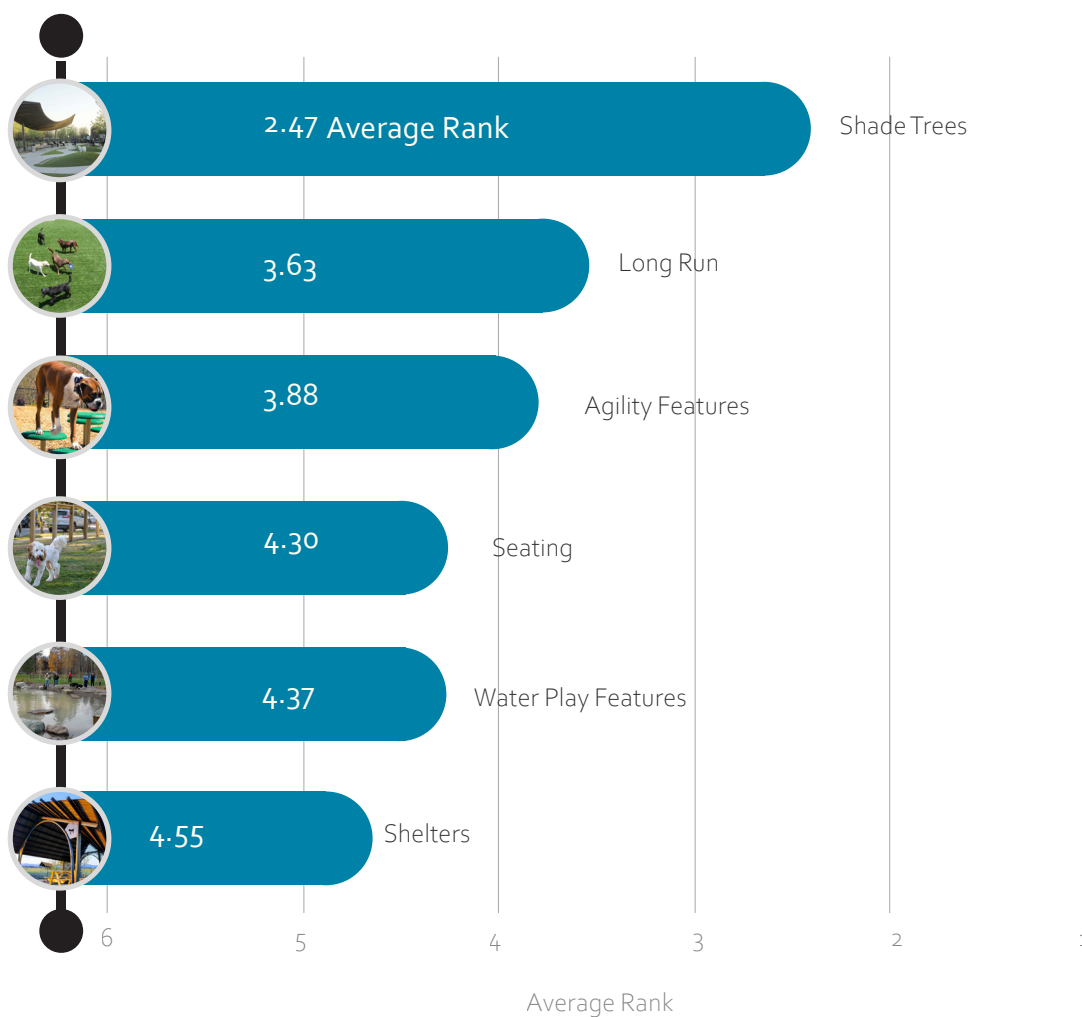
## Key Takeaways

- Not shown on the graph above is imagination based play, all which ranked low , where the majority of people voted them as the 8-10th option.
- Climbing and sliding being at the top correlates with the pop-up open houses. They were both mentioned in the open houses as top 4 priorities.

# Potential Dog Area Activities



Rank your favourite potential dog area activities that would make the park more enjoyable and functional results:



## Key Takeaways

- Not shown on the graph above is pathways and small dog areas all which ranked low, where the majority of people voted them as the 7th-10th option.
- Over half of respondents would value having shade trees, as this was the number one ranked item with the most number 1 votes as well as average.

# Qualitative Survey Results

What improvements could be made to better accommodate people with disabilities at Meadow Park?

1

### Accessible Surfacing



Accessible surfaces were clear number 1 priority for survey respondents on this question with over 20 mentions. People asked for the playground, splash park and walking paths to all be accessible.

2

### Places to Rest



Places to rest was the second most discussed item with 9 people mentioned this as a need. Survey respondents asked for additional benches, and covered spaces for people of all age to rest and relax.

3

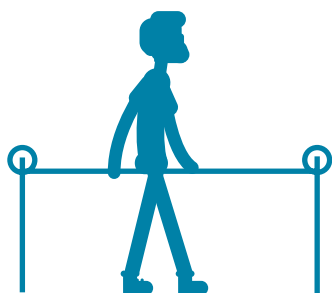
### Access to Parking



Eight people mentioned that they had issues with getting from the parking lot to the park. Most of these comments mentioned that they would like a smooth and accessible path from the existing parking lot into the park.

# What improvements could be made to better accommodate disabilities at Meadow Park?

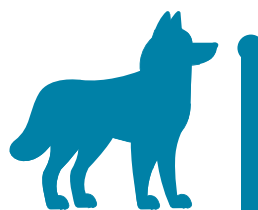
4/.



## Accessible Play Features

Six people mentioned the need for accessible play features. With the most common feature being identified being wheelchair accessible swings.

5/.



## Enclosed Dog Area

Five people asked for the future dog area to be fenced in. This is to accommodate neurodivergent people and small children to keep them safe from off leash dogs.

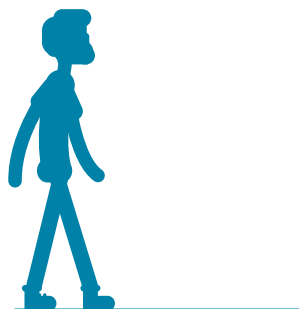
6/.



## Play Areas for Neurodivergent Children

Several people mentioned the importance that playground features and spray park areas be designed with neurodivergent children in mind.

7/.

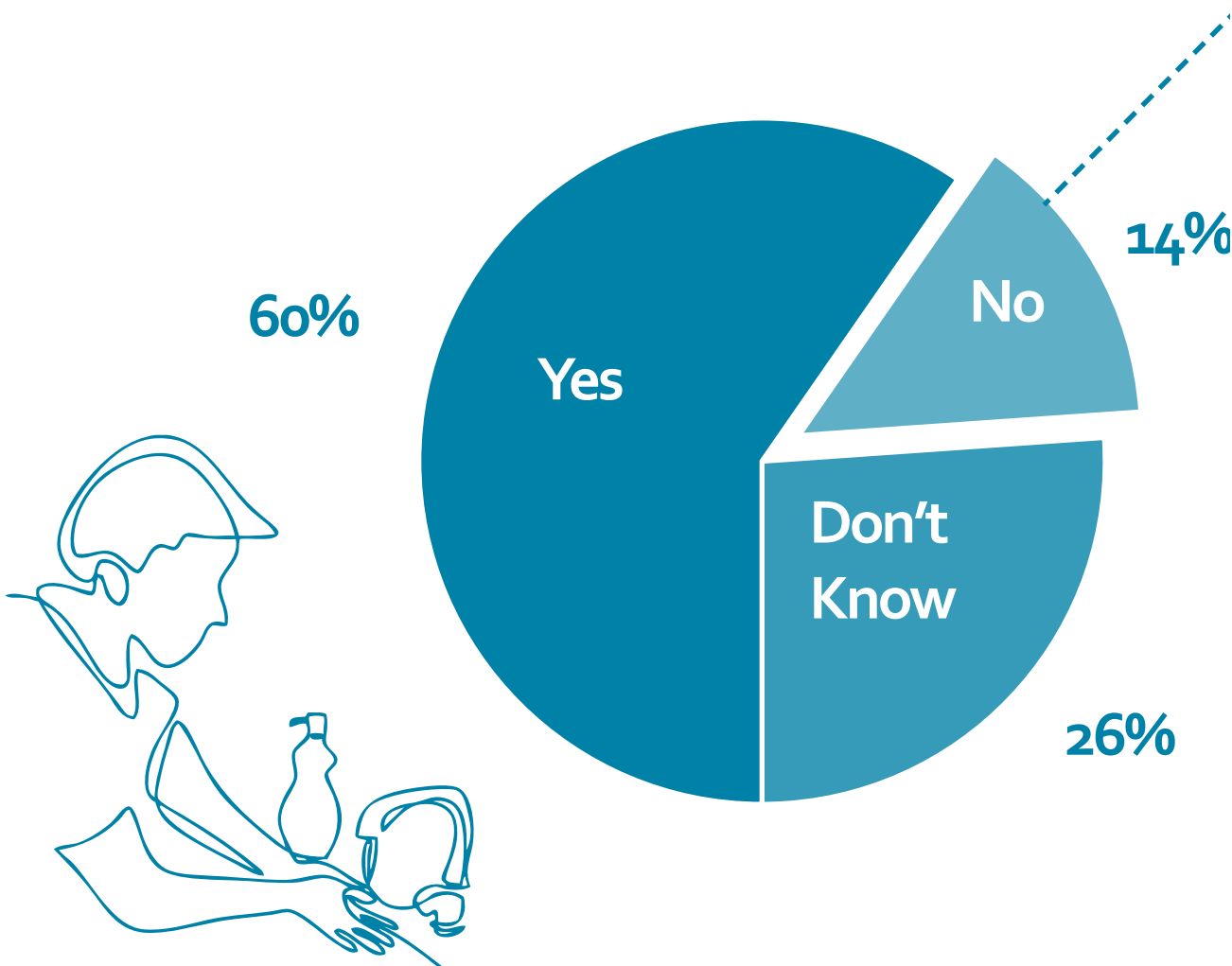


## Looping Paths

Several people requested that people with dementia could be accommodated in Meadow Park. They suggested this through the use of looping paths.

## What we Heard

Do you feel the Meadow Park washrooms currently meet the needs of the park users?



### Key Takeaways

- The existing washroom building is currently meeting the majority of park user needs as 60% voted yes to this question.
- The 6 main issues presented on the following page only represent 14% of respondents who were not satisfied with the current washrooms.



# If you answered no, please share why you feel the current washrooms do not meet the need of park users

## 1/. Size

Over 20 people mentioned that the size of the current washrooms do not meet their needs. Survey respondents said there can be a line to get in during peak summer hours. There was also discussion of the need for a family only area, and even specific change rooms.

## 2/. Location

Ten people mentioned that the location of the current washrooms do not meet their needs. Survey respondents claimed that the facilities are too far from the river, too far from the playground and also too far from the baseball fields.

## 3/. Operation Hours

Eight people mentioned they would like to see washrooms open longer. Most people specifically mentioned that they would like the washrooms open during baseball games/practice.

## 4/. Maintenance

Six people mentioned the current cleanliness of the washrooms do not meet their needs.

## 5/. Doors

Several people mentioned issues with the exiting doors to the washrooms. The largest issue is with the weight of the doors, as seniors and children have trouble opening them. Also issues were brought up with the door handles becoming too hot to open in summer.

## 6/. Gender Neutral

Several people voiced their opinion that they would like to see a gender neutral option for the washrooms.

# Qualitative Survey Results

Do you have any other play ideas and/or suggestions we should consider?

## 1/ Racquet Sports

19 mentions

A majority of people mentioned the need for additional pickleball courts to be incorporated into the park plan.

”

We need more pickleball courts even with the Racket club, the sport is growing and keeping our aging population healthy and sane.

Survey Respondent

“

## 2/ Skate Area

18 mentions

Several respondents discussed the importance of a skate area, and how a covered area would be hugely beneficial for park users.

”

Keep it as wide open and spacious as possible... a park with grass.

Survey Respondent

“

## 3/ Open Space

14 mentions

Several people mentioned they would like open space incorporated into play areas.



## 5. Pump Track

11 mentions

Typical survey response: "A pump track like the new Pemberton track would be great. It's used by a wide range of people and is ideal for kids..."



## 6. Exercise Area

8 mentions

Most of the comments asked for the existing exercise equipment to be returned to the park as well as additional equipment/ space for yoga.



## 7. Baseball

7 mentions

Survey respondents asking for baseball diamond upgrades and other field upgrades.



## 8. Ice

5 mentions

In at a tie for 8th place with 5 mentions, people asked for ice to place hockey - including asking for a regulation sized sheet.



## 8. Volleyball

5 mentions

Tied for 8th place with 5 mentions people asked for space to play volleyball or beach volleyball.



## 8. Winter Play

5 mentions

Typical survey response: "Winter seems like a very big opportunity. How can we draw more play use in the winter?"



## 8. Seniors Play

5 mentions

Coming in at a tie for 8th place with 5 mentions, the community wanted to find fun places for the elderly to play.



## 8. Basketball

5 mentions

Coming in at a tie for 8th place with 5 mentions, people wanted places to play basketball.



## 9. Climbing

3 mentions

Several people asked for places to climb, such as a dedicated climbing wall.

# Qualitative Survey Results

## Final Thoughts

### 1 Local Interests

Over twenty people mentioned that they would like the park design to reflect the interests of the local community, not tourists.

“ I live in Alpine with my partner and 3 year old daughter and we absolutely love going to Meadow Park all year round. I wish there was a winter maintained/rain friendly play area. ”

Survey Respondent

### 2 Spray Park

Many people mentioned in their final thoughts that the spray park was their number one priority in a Meadow Park redevelopment.

“ An official off leash dog area would be great, but not if it’s going to be a patch of gravel like at Alpha Lake. ”

Survey Respondent

### 3 Dog Area

Tied for 3rd place in mentions with leave as is’. Many people asked for a separate fenced in off lease area for dogs.





### 3. Leave as is

Thirteen people mentioned that they would like to leave the park as it is. Many local park users find the park a good mix of space, nature, and active programming.



### 4. Shade

Many people asked for different kinds of shade; over the playground, spray park, and un-programmed areas.



### 5. Variety

Asking for a variety of activities to participate in around the park.



### 6. Natural Areas

People asked for the park to keep or enhance natural features of the river, or including things like native plants and drought resistant planting.



### 7. Conservation

Several people mentioned how important water conservation is for any new park features.



### 8. Lighting

People requested lights be installed, particularly ones suitable for baseball, as well as a dim illumination in the other sections.



### 9. Seniors

Several people requested that the park be designed with senior citizens in mind.



### 10. Food Trucks

Several people mentioned it would be beneficial to have space for food trucks to set up in the park.



### 11. Construction

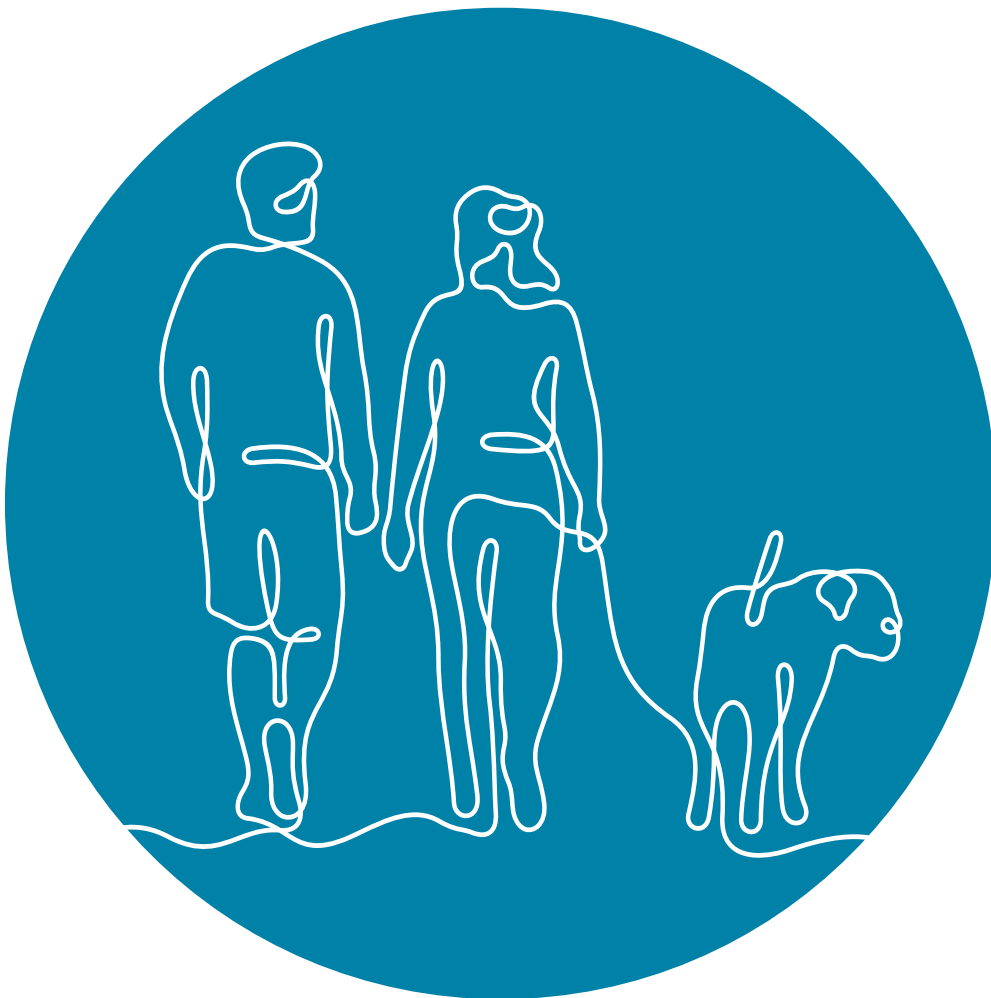
People asking for the construction to be phased and the whole park not to be closed during summer months.



# Next Steps

The design consultant and municipal staff will review and consolidate survey responses into an organized arrangement based on frequency of responses. Furthermore, they will take these responses and break them down into identifiable themes. Subsequent public engagement will soon be available, and the team looks forward to connecting with the community further.

Respondent feedback in addition to design best practices, amenities elsewhere in the neighbourhood and existing policy guidelines for neighbourhood level parks will inform the final design of the new park.





Please Note:

While a variety of tactics were used to reach a diverse range of citizens, results from open surveys such as those provided do not represent a statistically significant, random sample of all Whistler and surrounding area residents. Due to the opt-in and open nature of participation, results do not necessarily reflect the views of all Whistler residents.

Additional efforts were made to connect with harder-to-reach communities via affected parties and community liaison networks; however, under-represented groups and individuals remain under-represented in the overall results.

Additionally, results may not be representative of groups experiencing housing need, including those experiencing homelessness or accessing housing with supports.



# INTRODUCTION

## Meadow Park RePLAY

### Overview

Meadow Park was constructed almost 40 years ago and serves a multitude of purposes, not only as a destination park for visitors, but also as an important community and neighbourhood amenity.

The park requires reinvestment to provide long-term climate change resilience, respond to evolving and ever increasing resident and visitor demands, improve public safety, and to address aging and failing infrastructure.

### Need for Change

Parks visitation has grown rapidly in recent years, with significant increases noted during summer 2020 and 2021. The pressures on our parks require that they are more robust and accommodate a greater number of visits within the same footprint. There were more than 176,000 visits to four destination parks (Lost Lake Park, Rainbow Park, Lakeside Park and Alpha Lake Park) in summer 2021.

While use levels at Meadow Park have not been studied, this project intends to help address capacity issues at other parks by making Meadow Park more attractive to users.



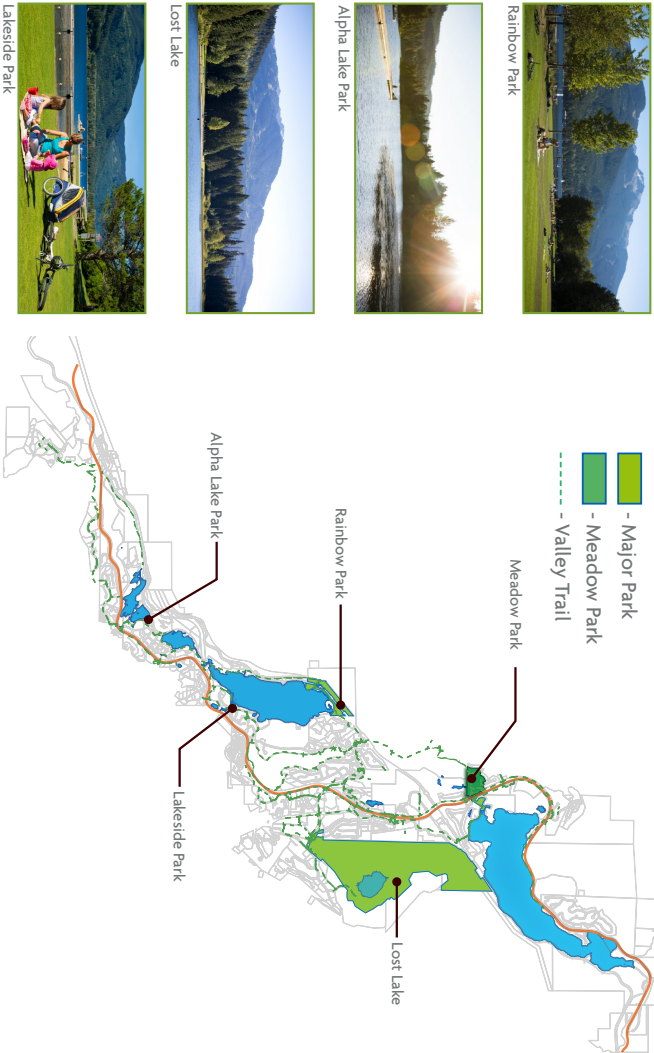
### Funding



The Meadow Park RePLAY project is 100% funded by the Resort Municipality Initiative (RMI).

### Popular Park Mapping

Map showing most popular parks in Whistler with Meadow Park Highlighted





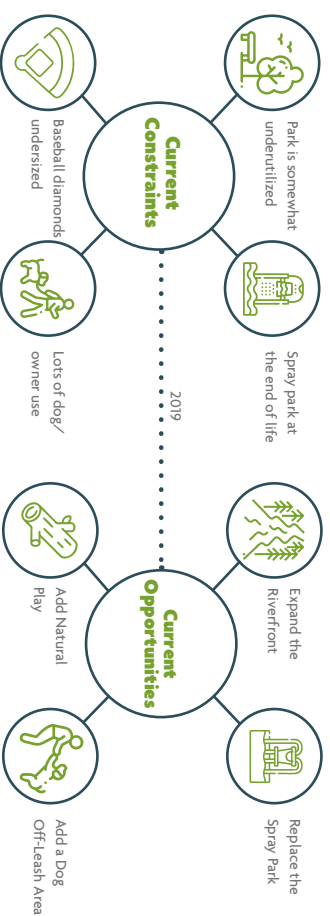
# INTRODUCTION



## Meadow Park Redevelopment

## Phase 1 Site Plan

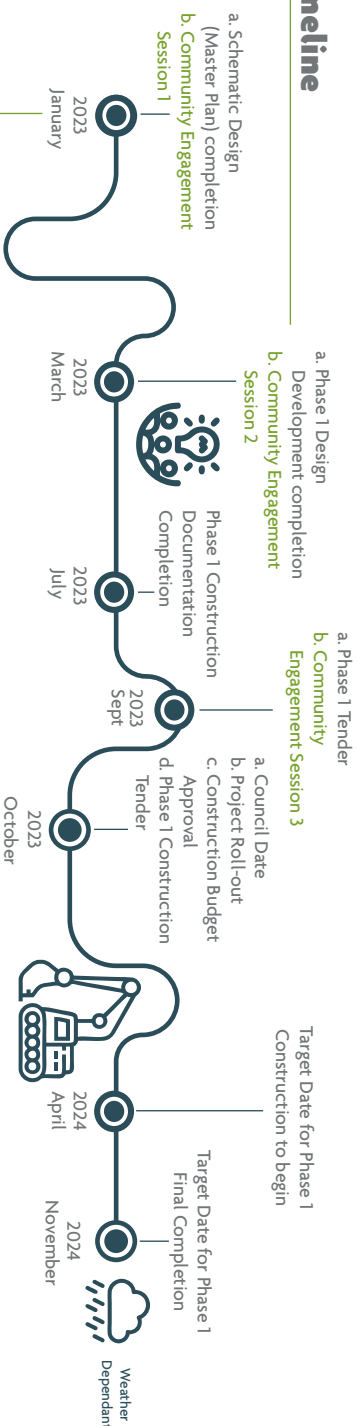
### What We Heard Through the 2019 Outside Voice Parks Master Plan



Top "Big Ideas" priorities that emerged through the engagement (over 600 responses)



### Timeline



**WE ARE HERE**

Green Text = Public Engagement opportunities

# PARK OBJECTIVES

## BIG MOVES CLIMATE STRATEGY

### WHISTLER'S 5 GOALS:

				
<b>Move Beyond The Car</b> <ul style="list-style-type: none"> <li>• Create a diverse park in close proximity to a residential neighbourhood</li> <li>• Create desirable amenities (spray park, playground, dog park, teen area, etc.) in close walking/biking proximity</li> </ul>	<b>Minimize Threats from Wildfires</b> <ul style="list-style-type: none"> <li>• Convert irrigation from potable water to non-potable source to conserve water.</li> <li>• Use drip irrigation</li> <li>• Explore water conservation strategies at a new spray park</li> </ul>	<b>Lower carbon Consumption</b> <ul style="list-style-type: none"> <li>• Explore utilizing materials that are robust and durable and that reflect the local context</li> <li>• Close the loop &amp; shift toward lower carbon consumption</li> </ul>	<b>Resilience to extreme Weather events</b> <ul style="list-style-type: none"> <li>• Explore seasonal covered outdoor spaces for shade and rain protection.</li> <li>• Integrate shade trees</li> <li>• Storm water management</li> <li>• Design for Flooding</li> </ul>	<b>Protect Local Ecosystems and Biodiversity</b> <ul style="list-style-type: none"> <li>• Revegetating areas along the River to recreate natural habitat</li> <li>• Reimagining lawn areas</li> <li>• Create plant areas that are native, drought tolerant, low maintenance</li> </ul>

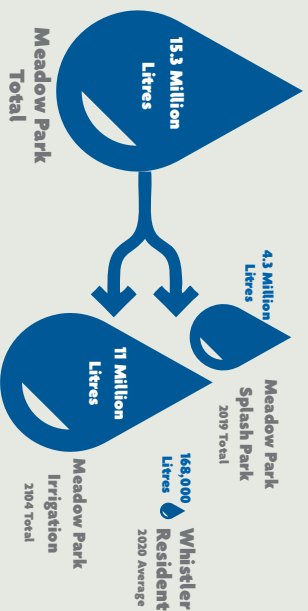


# THE VALUE OF WATER



Like many areas in BC, the community's value of water has increased over the last 4 decades. This is due to potable supply limits, costs to supply and treat potable water, environmental concerns (droughts, aquifer depletion), wildfire defense, and ongoing media publicity about water issues elsewhere in North America.

## Annual Water Consumption



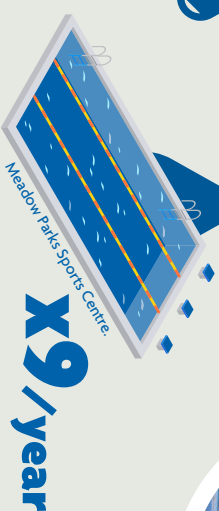
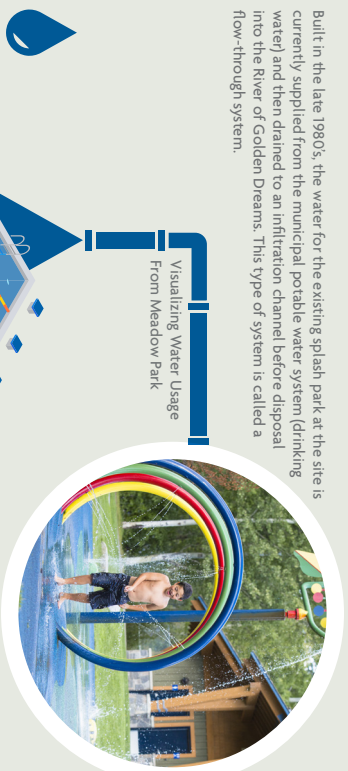
Whistler's total water consumption in 2021 was 5.02 billion litres or 462 litres/person/day. The total usage saw a marginal increase over 2020, however, per capita usage continued to climb above Whistler's performance target of 425 litres/per person/day due to a slight increase in total usage combined with an increase in average daily population.

Water is one of Whistler's most important assets, supporting natural areas, wildlife, residents and visitors. Using water resources wisely is fundamental to an environmentally responsible approach to living. If you would like to find out more please scan the QR code to the right.



## Current Water Usage at Meadow Park Spray Park

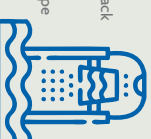
Built in the late 1980's, the water for the existing splash park at the site is currently supplied from the municipal potable water system (drinking water) and then drained to an infiltration channel before disposal into the River of Golden Dreams. This type of system is called a flow-through system.

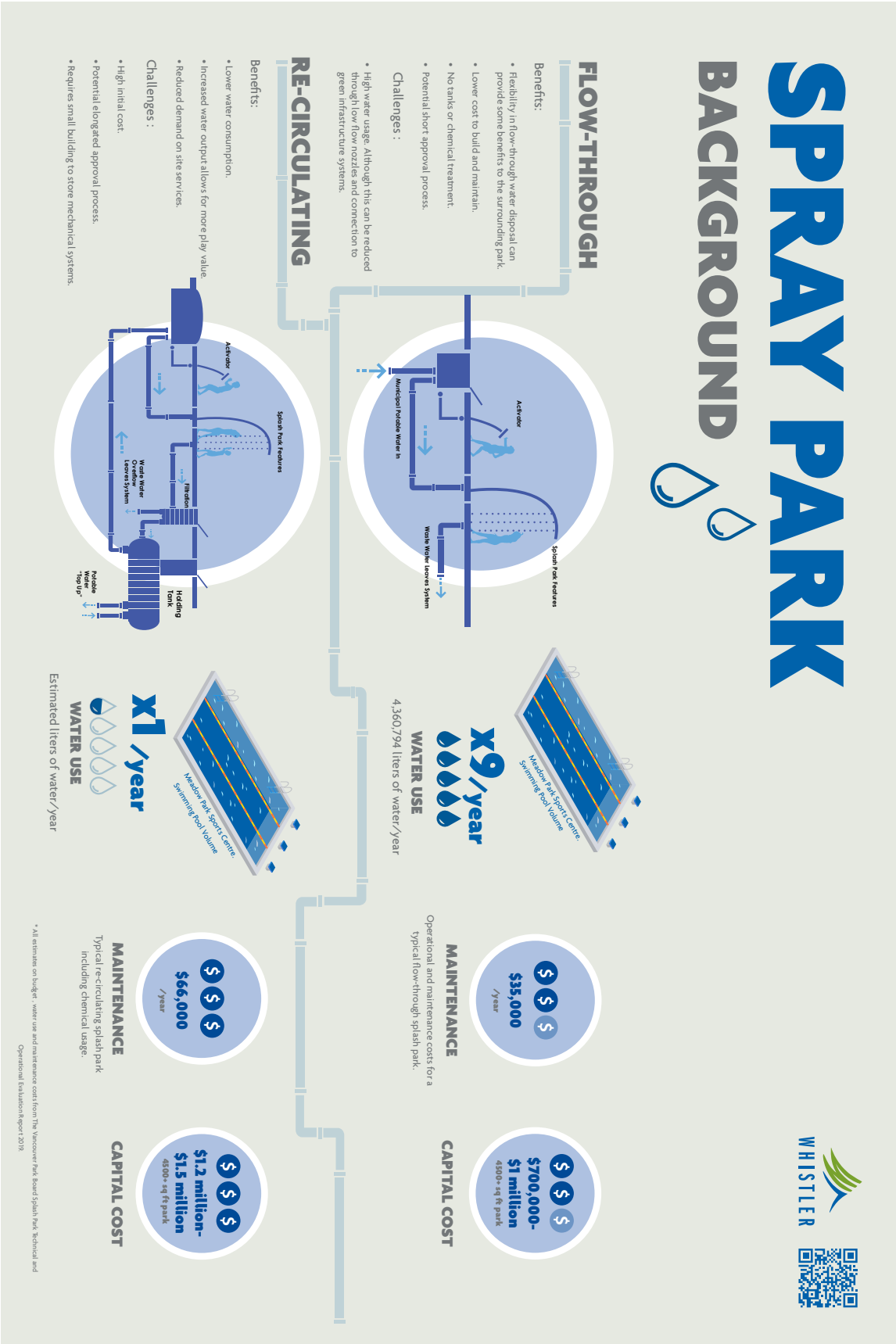


The existing splash park has uses 73 gallons per minute (gpm) or 46 liters per second (L/s) with push button activation and a set run time per activation. The annual splash park water usage was approximately 1,152,000 gallons (4,360,794 litres) (4360 m<sup>3</sup>) per year in 2018 and 2019. To help visualize this amount, it is equal to approximately 9 times the capacity of the large pool at the Meadow Parks Sports Centre.

## Water Conservation Strategies

- |  |   |
|--|---|
| <p><b>Irrigation</b></p> <ul style="list-style-type: none"> <li>• Summer 2022, installed a test well at Meadow Park</li> <li>• Will convert irrigation system from potable water to primarily non-potable source to conserve drinking water</li> </ul> | <p><b>Spray Park</b></p> <ul style="list-style-type: none"> <li>• Looking for community feedback on potential water conservation strategies</li> <li>• Consider spray park system type as well as potential use of waste water</li> </ul> |
|--|---|





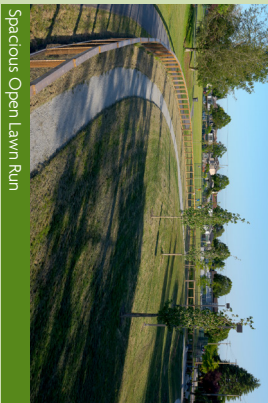
# DOG PARK FEATURES & ACTIVITIES



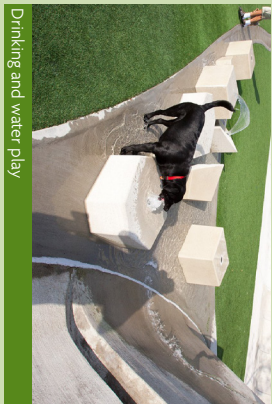
Precedent Images



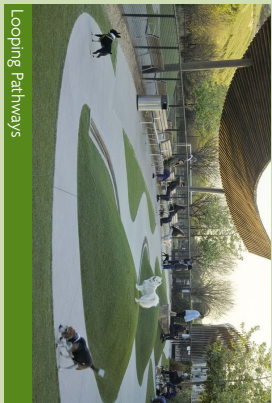
Shade Shelter



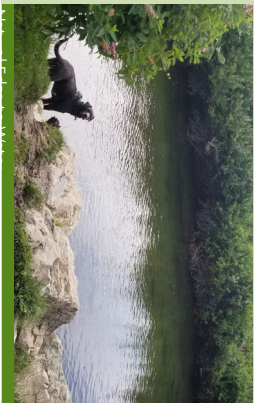
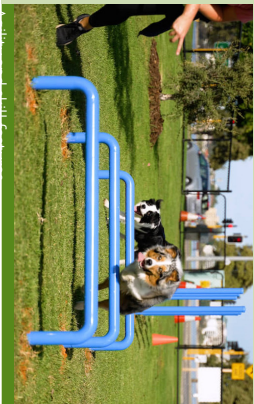
Spacious Open Lawn Run



Drinking and water play



Looping Pathways



Activities



Agility Features



Seating



Shade Trees



Shelters



Long Run



Small Dog Area



Water



Pathways

The precedent images shown are for inspiration and to help show how these features could look in the park and inform the design.

The activity icons correspond to stickers located near the large map. We would like you to locate them on the plan where you would like to see these features.

# TEEN ACTION FEATURES & ACTIVITIES



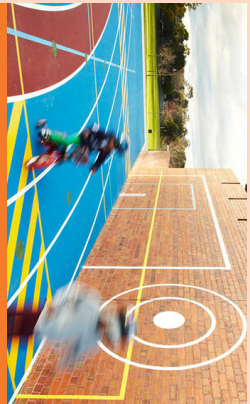
Precedent Images



Multi-use Courts with Table Tennis



Climbing and swinging structures



Activities



Skateboard



Bike



Integrated Skate Features



Passive Hangout Spaces



Shelter



Hangout



Climb



Scooter



Parkour



Multisport

The activity icons correspond to stickers located near the large map. We would like you to locate them on the plan where you would like to see these features.

The precedent images shown are for inspiration and to help show how these features could look in the park and inform the design.



# SPRAY PARK FEATURES & ACTIVITIES



Flow-through System Examples



Interactive water play



Sand and water play

Hybrid system Examples



Cannons



Ground Sprays

Recirculation system Examples



Big Water



Interactive Fountains

Less Water



More Water



Sand Play



Fog/Mist



Tunnel



Ground Spray



Cannons



Soak



Interactive Fountain

The precedent images shown are for inspiration and to help show how these features could look in the park and inform the design.

The activity icons correspond to stickers located near the large map. We would like you to locate them on the plan where you would like to see these features.



# Appendix

Open House Boards

## PLAYGROUND FEATURES & ACTIVITIES



Precedent Images



Nature Play



Themed Play Structures



Tower Slides



Rope Climbing Structures



Activities



Imagination



Slide



Climb



Swing



Hill Play



Zip Line



The precedent images shown are for inspiration and to help show how these features could look in the park and inform the design.

The activity icons correspond to stickers located near the large map. We would like you to locate them on the plan where you would like to see these features.

# PASSIVE FEATURES & ACTIVITIES



Precedent Images



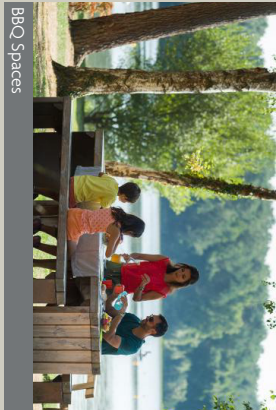
Drinking Fountain with dog bowl



Bookable Spaces



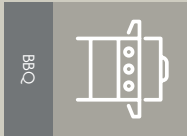
Informal seating



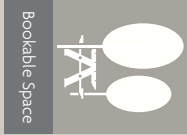
BBQ Spaces



Activities



BBQ



Bookable space



Social



Shelter



Hammock



Water Access



The precedent images shown are for inspiration and to help show how these features could look in the park and inform the design.

The activity icons correspond to stickers located near the large map. We would like you to locate them on the plan where you would like to see these features.





Existin  
Parkin

Existing  
Multi-court

Existing  
Tennis Court

SCOPE OF WORK

Teen Zone

Splash Park

Picnic Area

Baseball w/ tempo  
removeable fence

Playground

Picnic Area

Existing  
Parking  
Lot

Picnic Area

Tiered Water Access



