

MEADOW PARK rePLAY



[Home](#) / Meadow Park rePLAY

Committee of the Whole

Climate Action, Planning & Development Services

April 18, 2023



WHISTLER: A PLACE WHERE OUR COMMUNITY THRIVES, NATURE IS PROTECTED AND GUESTS ARE INSPIRED.

Overview

- Meadow Park was constructed almost 40 years ago
 - ✓ Serves a multitude of purposes
 - ✓ Not only as a destination park for visitors, but also as an important community and neighbourhood amenity
- Requires reinvestment
 - ✓ To address aging and failing infrastructure
 - Spray park, irrigation/drainage
 - ✓ To improve public safety
 - Spray park no longer meets VCH standards
 - ✓ To respond to ever increasing resident and visitor demands
 - ✓ To provide long term climate change resilience
 - ✓ To meet future programming opportunities



Need for Change

- Park visitation has grown rapidly in recent years
 - ✓ 176,000 visits to four destination park in summer 2021 (Lost Lake, Rainbow, Lakeside, Alpha Lake)
- Use levels at Meadow Park have not been studied
- Parks must become more robust and accommodate a greater number of visits within the same footprint
- Help address capacity issues at other parks by making Meadow Park more attractive to users
- Last time we invested \$ (apart from relatively minor upgrades)
 - ✓ **20 years ago**
 - Playground 2004
 - Washrooms in 1999/2000
 - Drainage added to the fields in 1998/1999

2023-2026 Council Strategic Priorities



2019 Outside Voice Parks Master Plan



Top “Big Ideas” priorities that emerged through the engagement (over 600 responses)

2020 Climate Action Big Moves Strategy



Move Beyond The Car

- Create a diverse park in close proximity to a residential neighbourhood
- Create desirable amenities (spray park, playground, dog park, teen area, etc.) in close walking/biking proximity



Minimize Threats from Wildfires

- Convert irrigation from potable water to non-potable source to conserve water.
- Use drip irrigation
- Explore water conservation strategies at a new spray park



Lower carbon Consumption

- Explore utilizing materials that are robust and durable and that reflect the local context
- Close the loop & shift toward lower carbon consumption



Resilience to extreme Weather events

- Explore seasonal covered outdoor spaces for shade and rain protection.
- Integrate shade trees
- Storm water management
- Design for Flooding

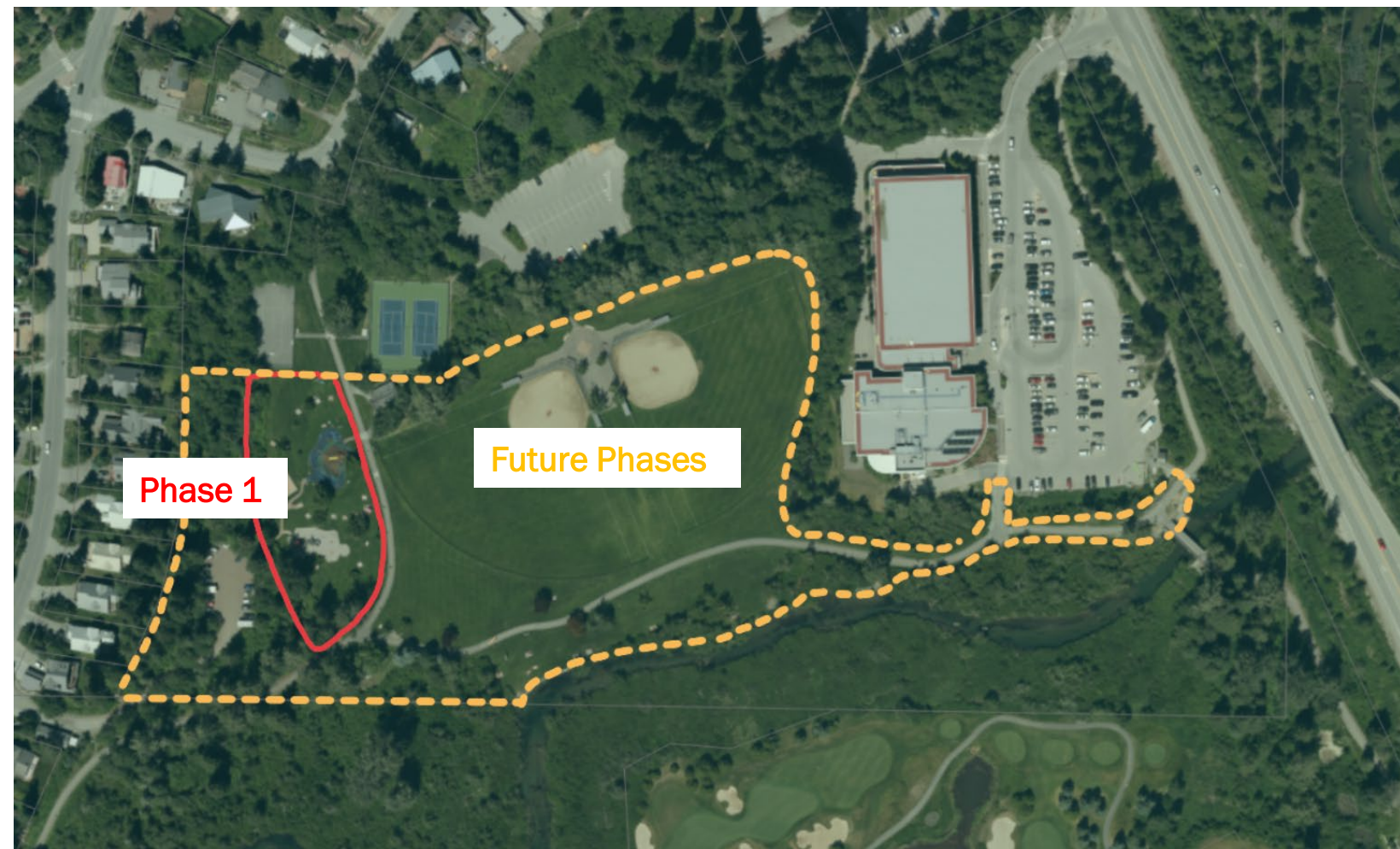


Protect Local Ecosystems and Biodiversity

- Revegetating areas along the River to recreate natural habitat
- Reimagining lawn areas
- Create plant areas that are native, drought tolerant, low maintenance

Budget + Scope

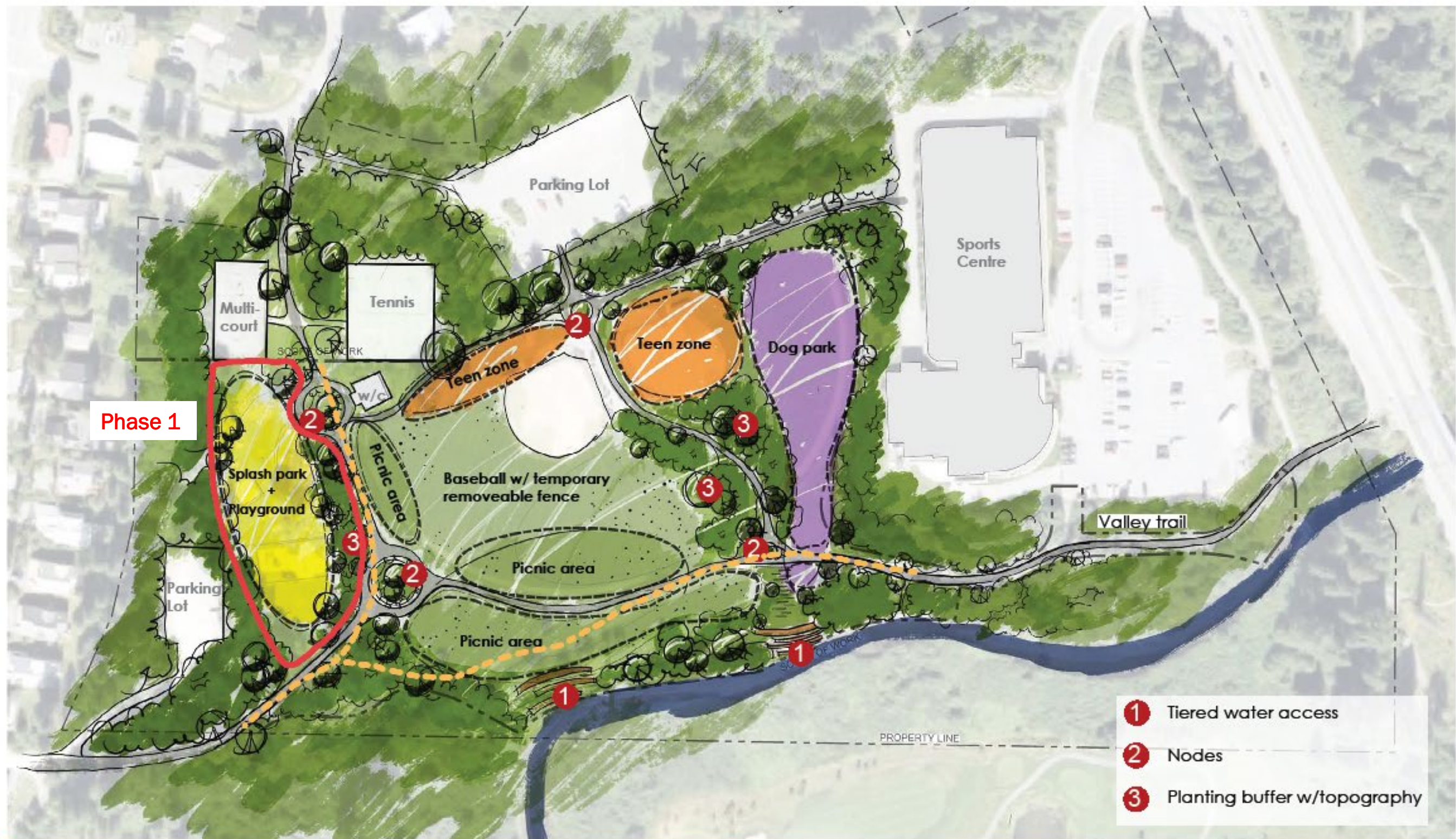
- 2022-2024 Approved RDS - \$3,497,000
- Spent 2022 - \$120,000
- Budget 2023 - \$352,000
- Scope
 - ✓ Meadow Park masterplan and;
 - ✓ Design and construction services for advancement of Phase 1 (Play plaza)



Programming

- Builds off feedback received from Outside Voice
 - ✓ Replace spray park, add dog off leash area, expand the riverfront, add natural play
- Challenge to achieve this in the same physical footprint – given the spatial requirements of 2 baseball diamonds
- Baseball diamonds
 - ✓ Undersized – can only be used for Little League (Whistler Minor Baseball)
 - ✓ Underutilized – ball season runs from May – June (6 weeks total)
- 2 diamonds to 1 to accommodate other park programming objectives

Programming Plan



Consultation Summary

- Jan 23 – Feb 5
- 2 components
 - ✓ 3 Pop up open houses
 - Consulted with 100+ people over the 3 events (30 of which were kids, 400+ walked by)
 - ✓ Online survey – 2 week window
 - (Jan 23-Feb 5), Bang the Table
 - 1,700 site visits
 - 379 engaged visitors



The screenshot shows the website for the Meadow Park rePLAY project. The header includes the Whistler Resort Municipality of Whistler logo and navigation links: Home, News, Get involved, Subscribe, Past projects, a search bar, and the name 'aoja'. The main banner features the title 'MEADOW PARK rePLAY' in large white and orange letters, with an illustration of a family walking. Below the banner, the page title 'Meadow Park rePLAY' is repeated. Social media icons for Facebook, Twitter, LinkedIn, and Email are shown. A section titled 'Help us make Meadow Park Awesome!' includes a paragraph about the project and a list of seven steps for community involvement. A 'Project Timeline' section lists key events from January 2023 to July 2023. A 'Who's Listening' section identifies the Climate Action, Planning & Development Services, Parks Planning Team, and Mayor & Council. An 'Engagement Team' section lists the Communications & Engagement Department. A 'Timeline' section at the bottom provides a detailed project schedule from January 2023 to November 2024, with a 'WE ARE HERE' marker for January 2023. A note at the bottom states that the project is funded by the Province of BC's Resort Municipality Initiative (RMI).

WHISTLER Resort Municipality of Whistler

Home News Get involved Subscribe Past projects Q Search aoja

MEADOW PARK rePLAY

Home / Meadow Park rePLAY

Meadow Park rePLAY

f t in e

Help us make Meadow Park Awesome!

Imagination and love for play required! Meadow Park is an important, well-used community space in Whistler. With the increase in park use and its aging equipment, it's time to reimagine a future Meadow Park.

We need your imagination and ideas to help us create a comfortable, fun and inclusive space! Here's how you can help:

1. Attend the Community input pop-ups:
 - **Monday, January 23:** 2 p.m. to 4 p.m., Whistler Public Library
 - **Wednesday, January 25:** 3 p.m. to 5 p.m., Meadow Park Sports Centre
 - **Thursday, January 26:** 12 p.m. to 2 p.m., Whistler Public Library
2. Review the 'Project Information' in the tabs below.
3. Youth, take the 'Youth Poll' and tell us what you currently love about Meadow Park
4. 'Share an Idea' below on the park areas of: Splash Park, Playground, Teen area, Dog Park and Passive area.
5. Take the 'rePLAY Survey' to give us more insights into you, and how you use the park currently, and how you'd like to use it in the future.
6. Do you have a question about this project or the engagement process? Ask us a question by clicking the 'Ask a Question' tab below.
7. The imagination of the entire community is needed! Share with your friends, neighbours and networks!

Input period closes on February 5, 2023 at midnight.

Timeline

a. Schematic Design (Master Plan) completion
b. Community Engagement Session 1
2023 January

a. Phase 1 Design Development completion
b. Community Engagement Session 2
2023 March

Phase 1 Construction Documentation Completion
2023 July

a. Phase 1 Tender
b. Community Engagement Session 3
2023 Sept

a. Council Date
b. Project Roll-out
c. Construction Budget Approval
d. Phase 1 Construction Tender
2023 October

Target Date for Phase 1 Construction to begin
2024 April

Target Date for Phase 1 Final Completion
2024 November

Weather Dependent

WE ARE HERE Green Text = Public Engagement opportunities

This project is generously funded by the Province of BC's Resort Municipality Initiative (RMI).

Project Timeline

Pop-Up Input Booth @ Whistler Public Library
January 23 2023

Pop-Up Input Booth @ Meadow Park Sports Centre
January 25 2023

Pop-Up Input Booth @ Whistler Public Library
January 26 2023

Community Engagement Session #2
March 2023

Phase 1 Construction Drawings Complete
July 2023

more..

Who's Listening

Climate Action, Planning & Development Services

Parks Planning Team
Email parksplanningprojects@whistler.ca

Mayor & Council

Mayor
Resort Municipality of Whistler
Email council@whistler.ca

Engagement Team

Communications & Engagement Department

Survey Data Collection

- Demographic
- Whistler postal code
- Participation in Outside Voice
- Frequency of park use, who you visit the park with
- Accessing Meadow Park - car, bike, walk
- Disability considerations – improvements that could be made
- Washrooms – current use, improvements that could be made

- Ranking proposed areas (in order of importance)
 - ✓ Open space, spray park, playground, dog off leash
- Ranking activity ideas within the proposed areas (in order of importance)
 - ✓ Spray park – slides, ground sprayers, soakers, interactive fountains
 - ✓ Dog park – shade trees, long run, agility features, seating

Summary - What We Heard – 1st Priority

Spray park

- ✓ #1 priority

Local interests

- ✓ Program for residents not visitors
- ✓ Preserve open space
- ✓ Leave as is

Racquet sports

- ✓ More racquet sport facilities
- ✓ 4500 Northlands outcomes impact on this project

Dog off leash area

- ✓ Leave it as is
- ✓ Fully fence in

Other Priorities:

- Skateboard area
- Pumptrack
- Outdoor exercise area
- Senior activity – walking loop

What key data formulates the Meadow Park Master Plan?



1 OUTSIDE VOICE PARKS MASTER PLAN

2 COMMUNITY INPUT
from Phase 1 and Phase 2 engagement

3 SITE CONSTRAINTS
Environmental considerations, spatial considerations

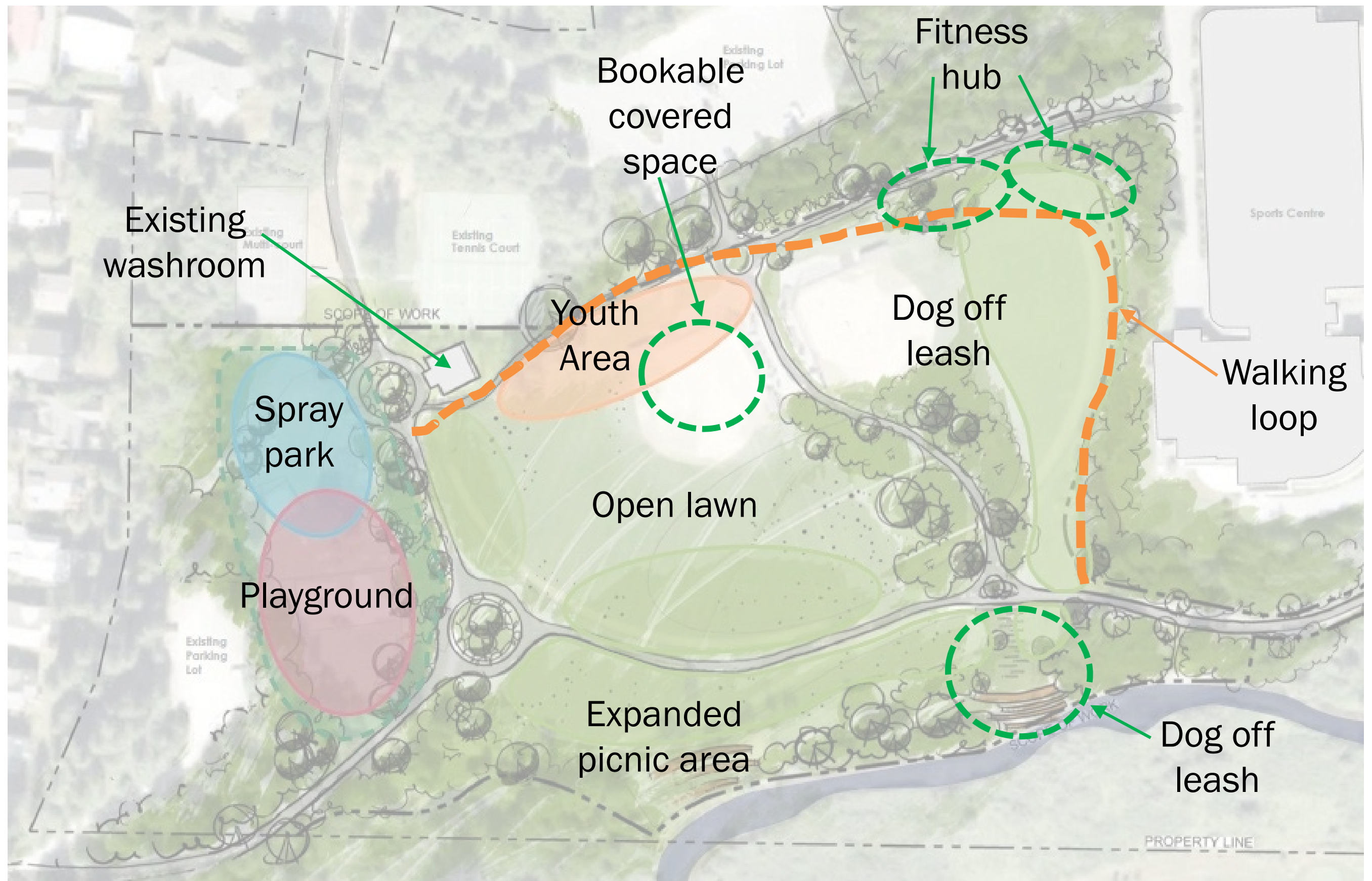
4 CURRENT LEVEL OF USE
The amount that each feature or area is currently being used

5 IMMEDIATE NEED
Ageing and failing infrastructure as well as safety

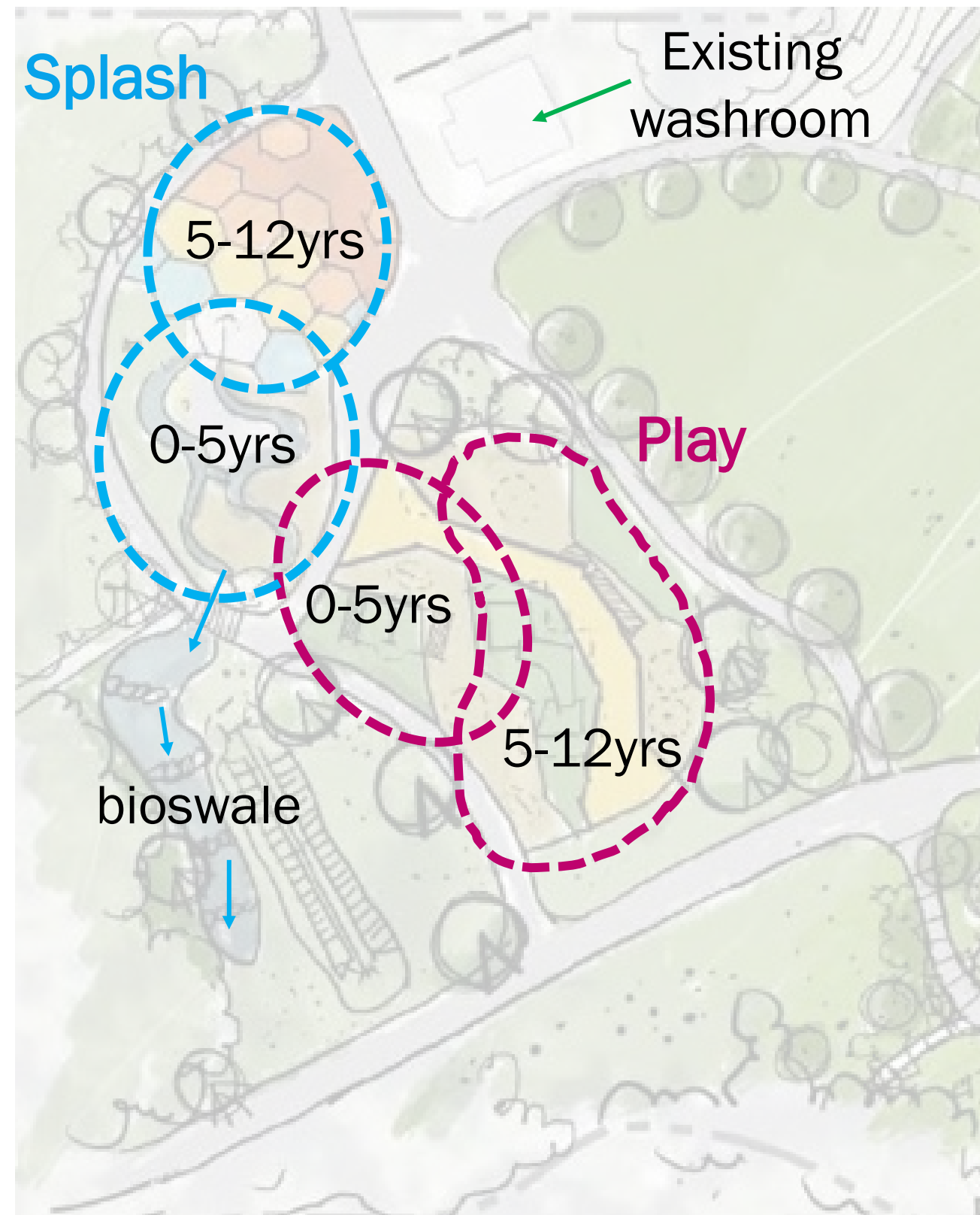
6 SMART TOURISM PRINCIPLES
Design parks to encourage dispersion

7 OPERATIONAL EXPERIENCE
Day to day experience and observations

Incorporating What We Heard



Play Plaza – Initial Ideas



Park Water Conservation

- Current water useage
 - ✓ Existing spray park used approx. 1.152 million gallons of water during the 2019 season
 - ✓ Equivalent of 9x the volume of Meadow Park pool
 - ✓ Existing irrigation system uses approx. 3 million gallons per season

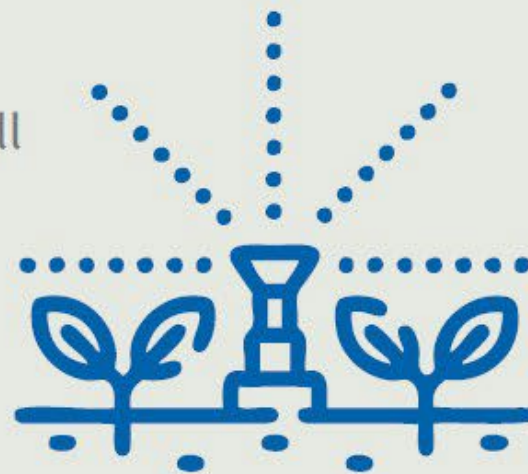


Park Water Conservation

Water Conservation Strategies

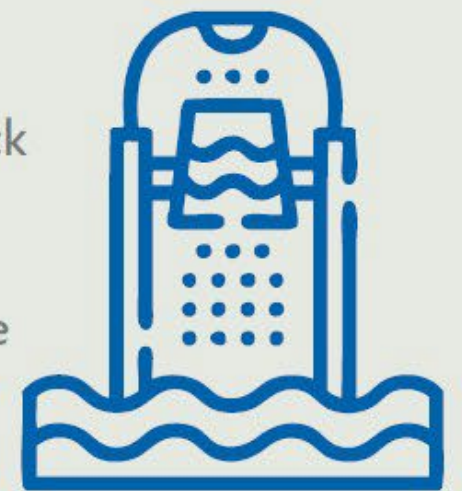
Irrigation

- Summer 2022, installed a test well at Meadow Park
- Will convert irrigation system from potable water to primarily non-potable source to conserve drinking water



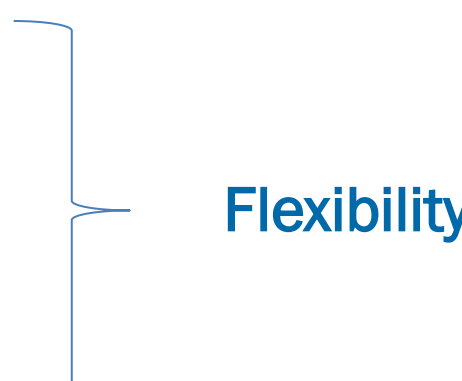
Spray Park

- Looking for community feedback on potential water conservation strategies
- Consider spray park system type as well as potential use of waste water



- Water conservation was mentioned as #7 priority in recent engagement

Next Steps

- Committee of the Whole – April 18
 - Consultation opportunity 2 (*Consult*) - Draft Master Plan - May
 - Consultation Summary Report 2 – June
 - Council – Consultation Summary + Final Master Plan - June
 - Consultation opportunity 3 (*Inform*) – Detailed Design Phase 1 (Spray park) - July
 - Detailed Design through Tender – Aug – Oct
 - Tender Period – Nov
 - Contract Award – Dec
 - Construction – 2024
- 
- Flexibility

Summary

- Update COTW on where the project is at
- Report out on first phase of consultation
- Update on timeline for second phase of consultation

