

INTRODUCTION

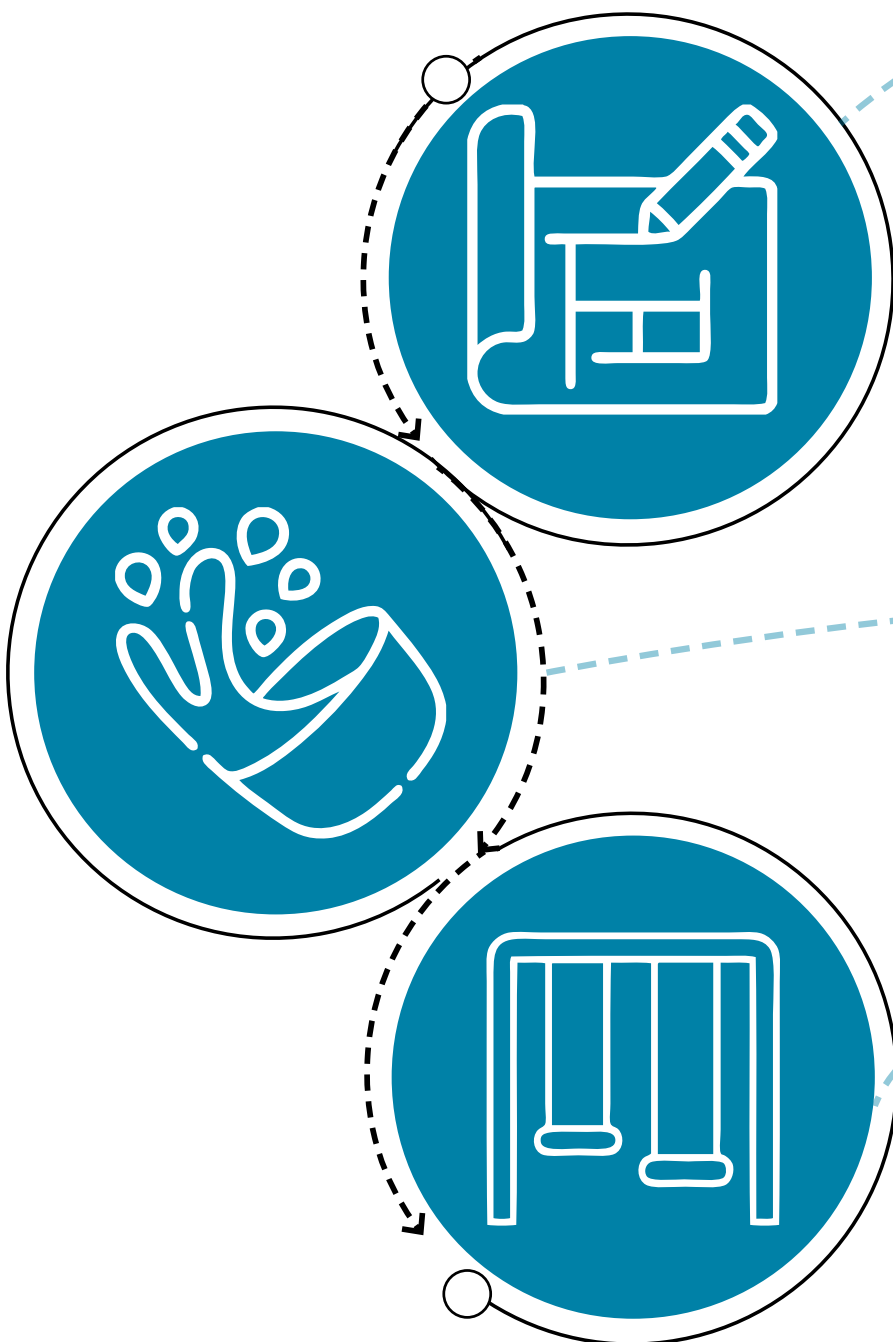
Meadow Park RePLAY Phase 2

Overview



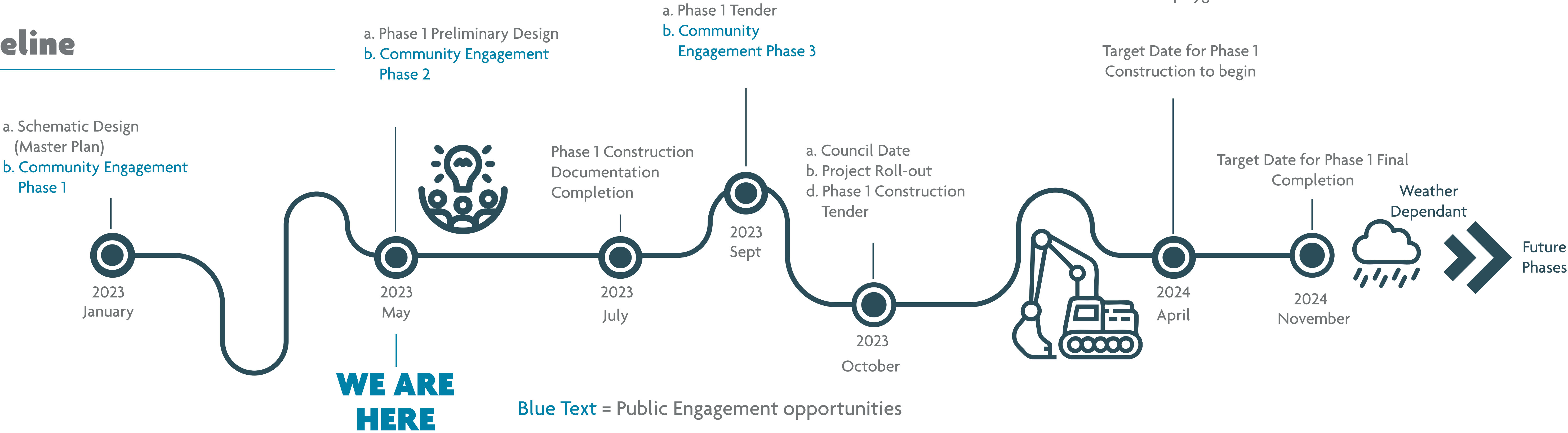
- Meadow Park was constructed almost 40 years ago.
- Requires reinvestment for climate change resilience, improving public safety, and addressing aging infrastructure.
- It serves as a destination park and community amenity hub.
- Whistler parks visitation has rapidly increased, with over 176,000 visits to four destination parks in summer 2021 (Lost Lake Park, Rainbow Park, Lakeside Park and Alpha Lake Park).
- This project aims to enhance the user experience of Meadow Park by improving the comfort level and upgrading the existing infrastructure.

Design Considerations



- The design for Meadow Park will be implemented in phases, with the initial phase focusing on revitalizing the spray park and playground.
- The Meadow Park master plan includes several key features, such as expansive areas of open space, a dedicated enclosed area for off-leash dogs, direct access to the River of Golden Dreams, and the renovation of the playground and spray park facilities.
- The proposed spray park includes different elements like a water slide, ground sprays, and other features. It also acknowledges the nearby natural features and integrates the concept of water conservation.
- The proposed playground has numerous opportunities for climbing and swinging, along with a sizable zipline, all situated on a resilient rubber play surface and wood fibre, ensuring accessibility and enhancing safety in comparison to the current playground.

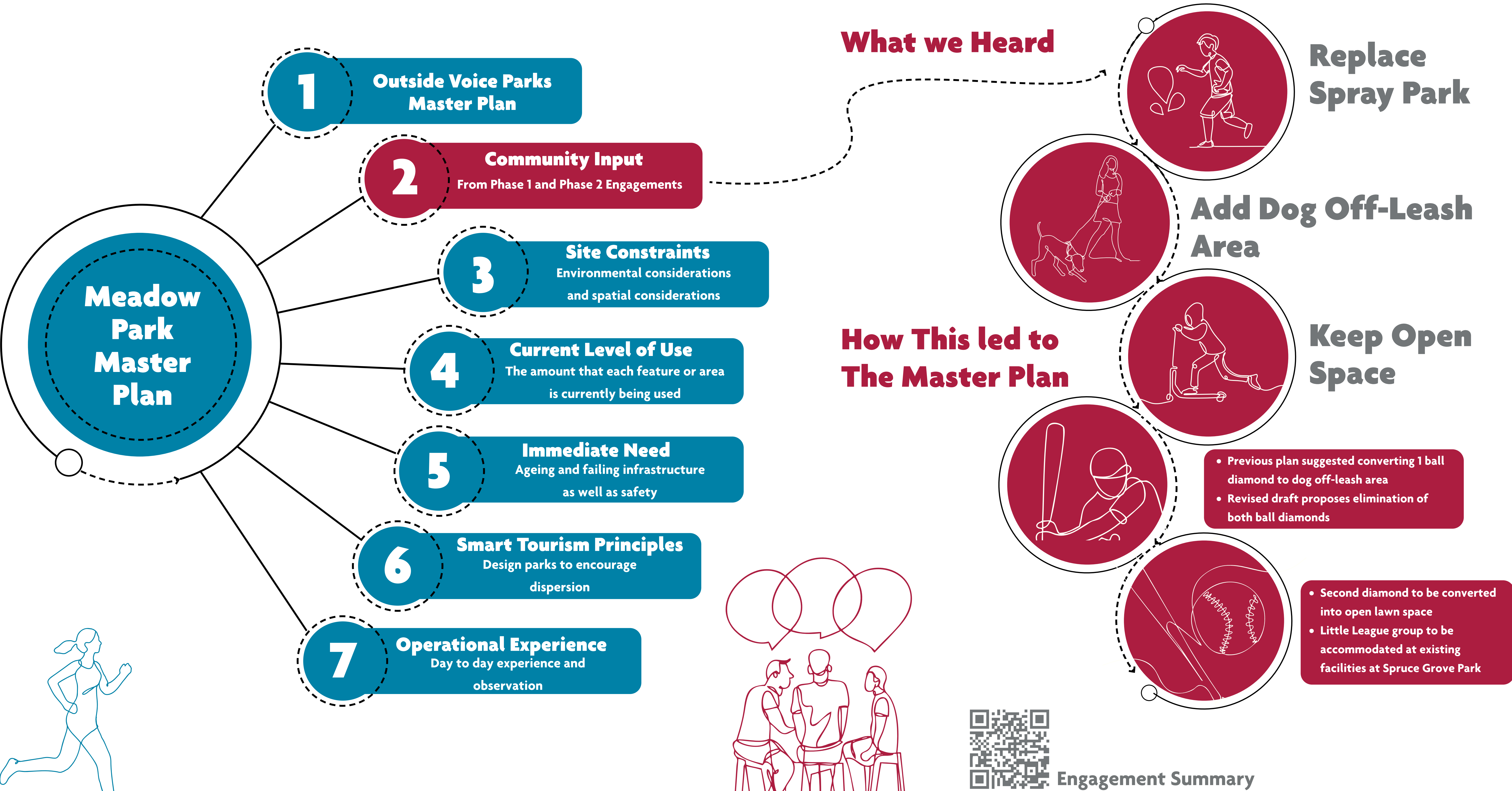
Timeline



ENGAGEMENT SUMMARY



Meadow Park RePLAY Phase 2:
What Key data Formulates the Meadow Park Master Plan?



MASTER PLAN



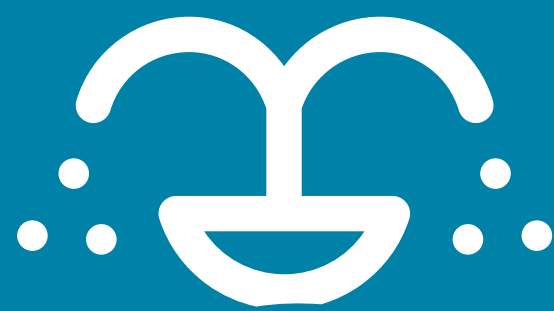


Playground Features



- 1 Tot Area
- 2 Hill Slide
- 3 Themed Play
- 4 Music Play
- 5 Zip Line
- 6 Swings

Splash Park Features



- 7 Bucket Dump
- 8 Water Slide
- 9 Water Channel
- 10 Water Sprays
- 11 Sand and Water Play
- 12 Bioswale

Dog Off-Leash Area Features



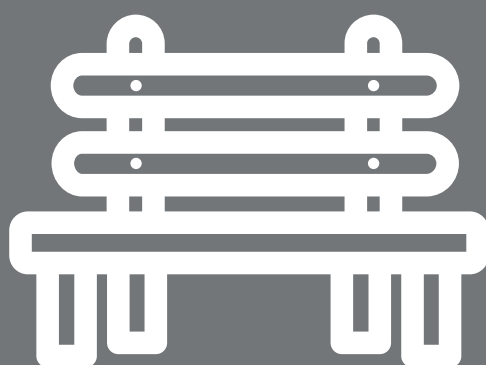
- 13 Agility Features
- 14 Lawn area
- 15 Seating area
- 16 Double Gate

Youth Zone



- 17 Parkour Area
- 18 Skate Area
- 19 Hang out zone

Amenities



- 20 Picnic area
- 21 Outdoor fitness
- 22 Bookable Space
- 23 Water Access
- 24 Valley Trail
- 25 Re-Naturalization

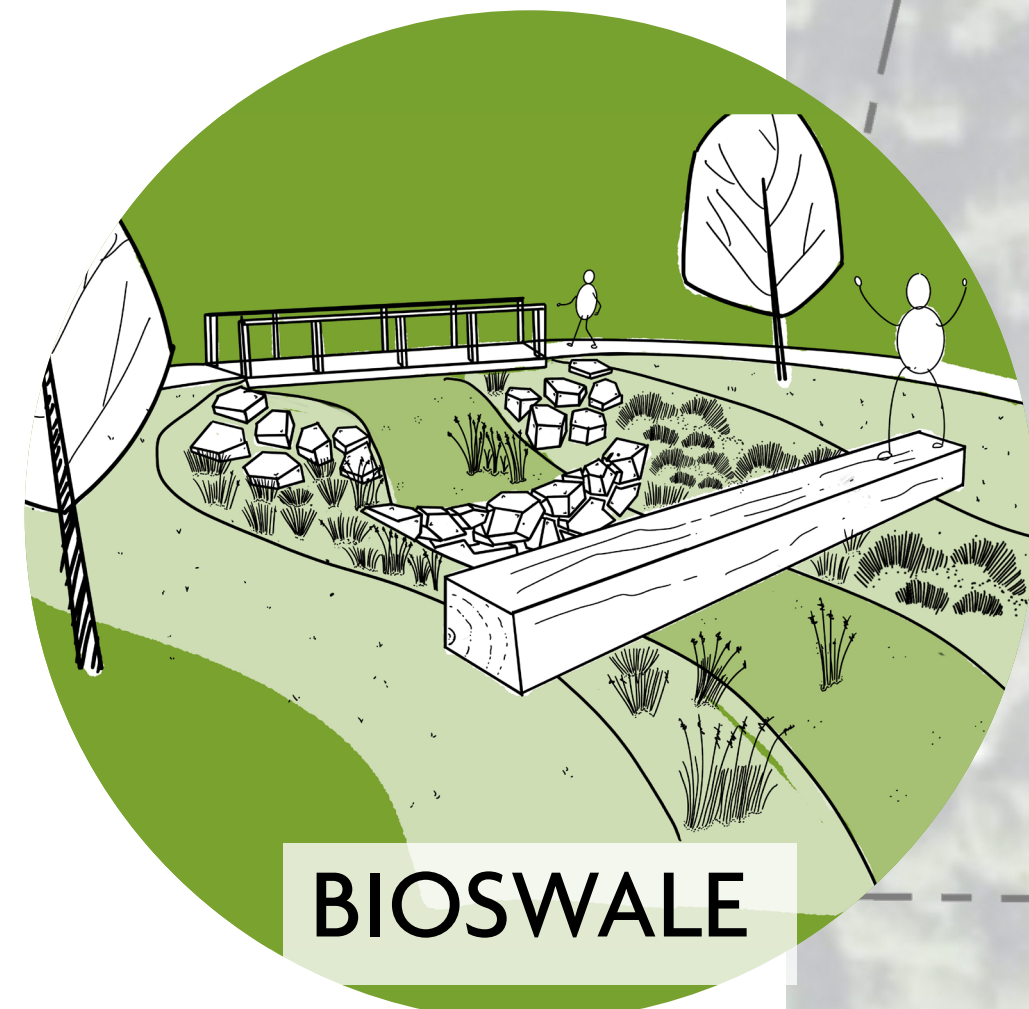
MASTER PLAN



To help explain the Meadow Park RePLAY master plan, a set of illustrations called 'vignettes' have been created. These vignettes showcase numerous essential features of the proposed master plan .



SPRAY PARK



BIOSWALE



PLAYGROUND



YOUTH ZONE



BOOKABLE SPACE



ADULT FITNESS



AGILITY DOG AREA



NATURAL DOG AREA



RIVERFRONT IMPROVEMENTS

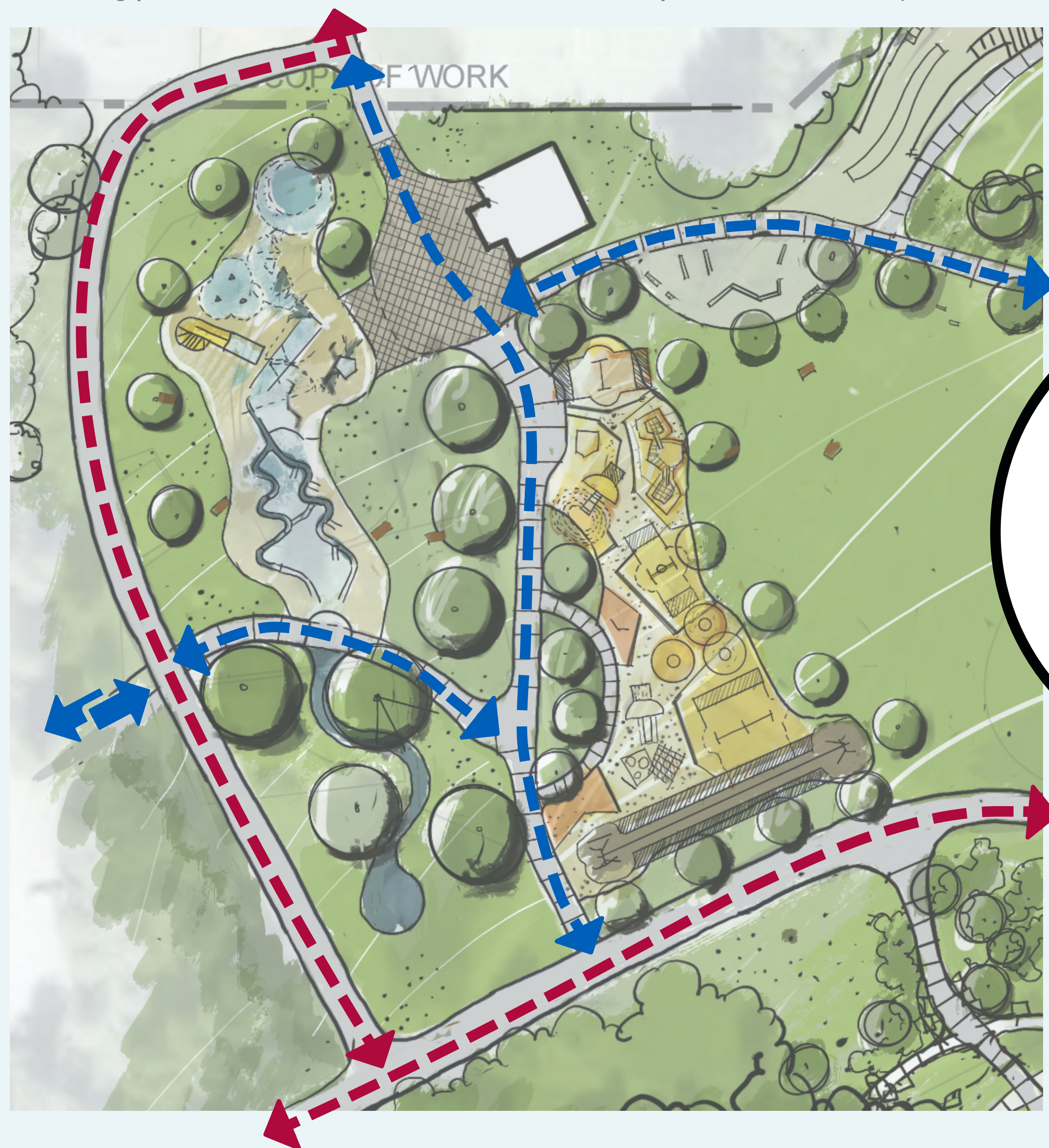


PHASE 1:

CIRCULATION OPTIONS: WHICH DO YOU PREFER?

Option 1: Relocated North/South Valley Trail

- Relocation of path around playground and spray park
- Change made to enhance safety of park visitors
- Particularly beneficial for children who frequent these areas
- Moving path reduces risk of collisions between park visitors and cyclists.



Option 2: Retain Valley Trail as Shared Path

- Promote shared zones
- Materiality change, signals to cyclists that they should slow down
- This change has been made to enhance the safety of park visitors
- Reinforces the idea of the park as a destination and not a corridor



SPRAY PARK

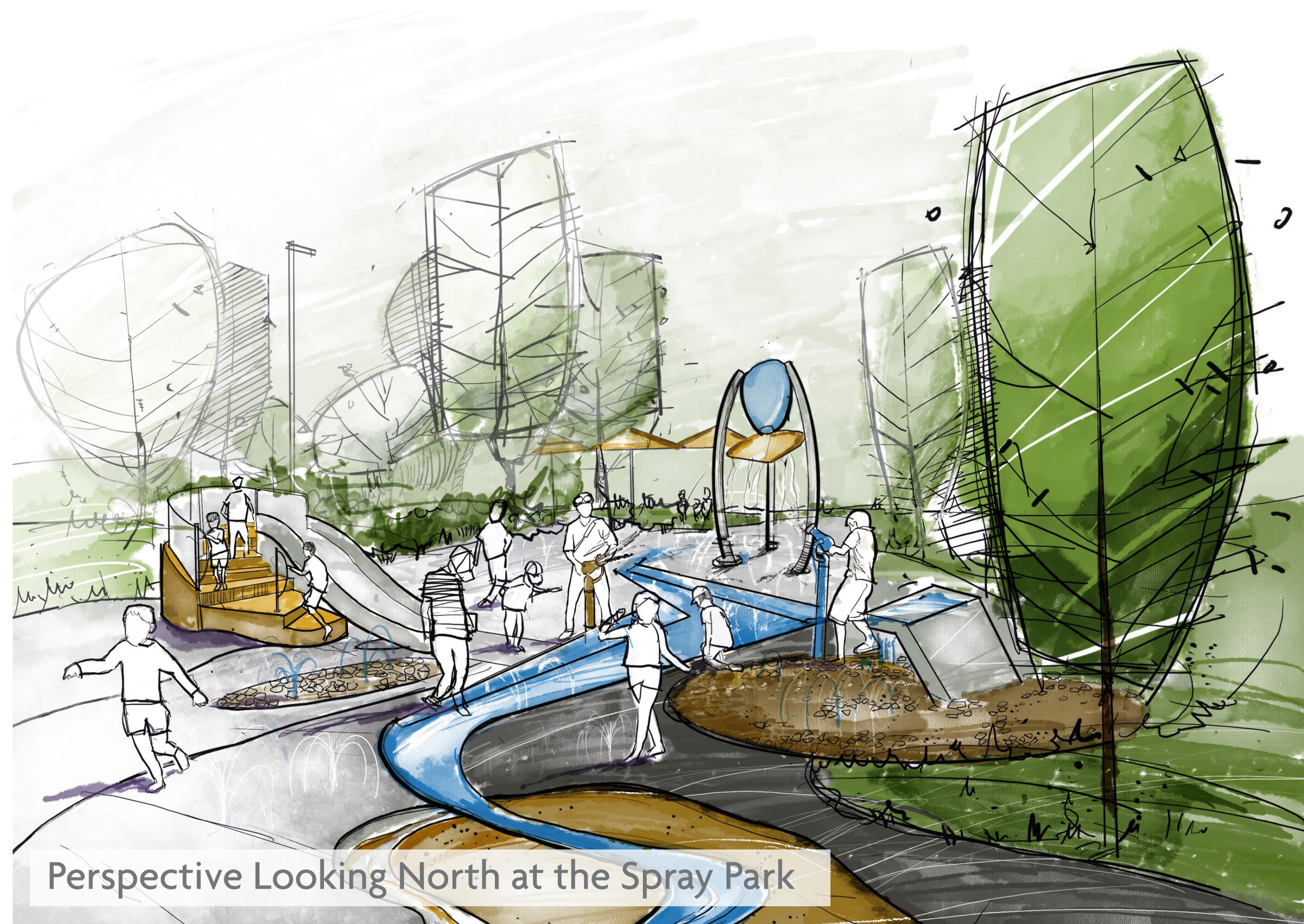


This panel provides a detailed view of the proposed spray park, highlighting its features and the various activities that visitors can enjoy. The park is designed to include a range of water-based features labelled below.

To help visitors better understand the water usage associated with each activity, the bottom of the panel features icons that indicate the amount of water that each activity is expected to use.

Proposed Spray Park features include:

- 1 Bucket Dump
- 2 Water Slide
- 3 Water Channel
- 4 Water Sprays
- 5 Sand and Water Play
- 6 Bioswale

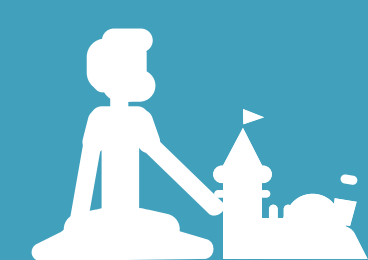


Perspective Looking North at the Spray Park

Labelled Plan of Proposed Splash Park

Less Water

More Water



Sand Play



Fog/Mist



Tunnel



Ground Spray



Cannons



Soak



Interactive Fountain



PLAYGROUND



Perspective Looking at the 5-12 play Area



Labelled Plan of Proposed Playground

This panel offers a comprehensive view of the proposed playground, showcasing its various features and the wide range of activities that visitors can enjoy. The park is designed to include a variety of play features, which are prominently displayed throughout the panel.

From climbing structures and slides to swings and interactive play areas, the playground offers a fun and engaging experience for visitors of all ages.

Proposed Playground features include:

- 1 Tot Area
- 2 Hill Slide
- 3 Themed Playstructure
- 4 Music Play
- 5 Zip Line
- 6 Swings



Imagination



Slide



Climb



Swing



Hill Play



Zip Line



Play Structure



Climb Rope

