

A man wearing a helmet and a grey t-shirt is riding a blue mountain bike on a dirt trail. He is looking towards the camera. In the background, other cyclists are visible on the trail, which is surrounded by lush green trees and foliage.

Whistler's Recreation Trails Strategy

A GUIDE FOR DECISION MAKING

Justa Jeskova

Public Information Session

October 18, 2023

5:30 – 7:00pm



WHISTLER: A PLACE WHERE OUR COMMUNITY THRIVES, NATURE IS PROTECTED AND GUESTS ARE INSPIRED.

Welcome

- Presentation recorded
 - Members of public will not be visible or recorded during this meeting
- Territorial Acknowledgement
- RTS Team
- Q&A after the presentation



Recreation Trails Strategy Overview



High-level direction

- Guide for how we develop and manage trails and trail amenities (e.g., staging areas, signage, etc.)
- NOT a trails master plan

Scope

- Municipal boundaries
- All non-motorized trail users
- Class 1 e-bikes and trials bikes
- New potential users

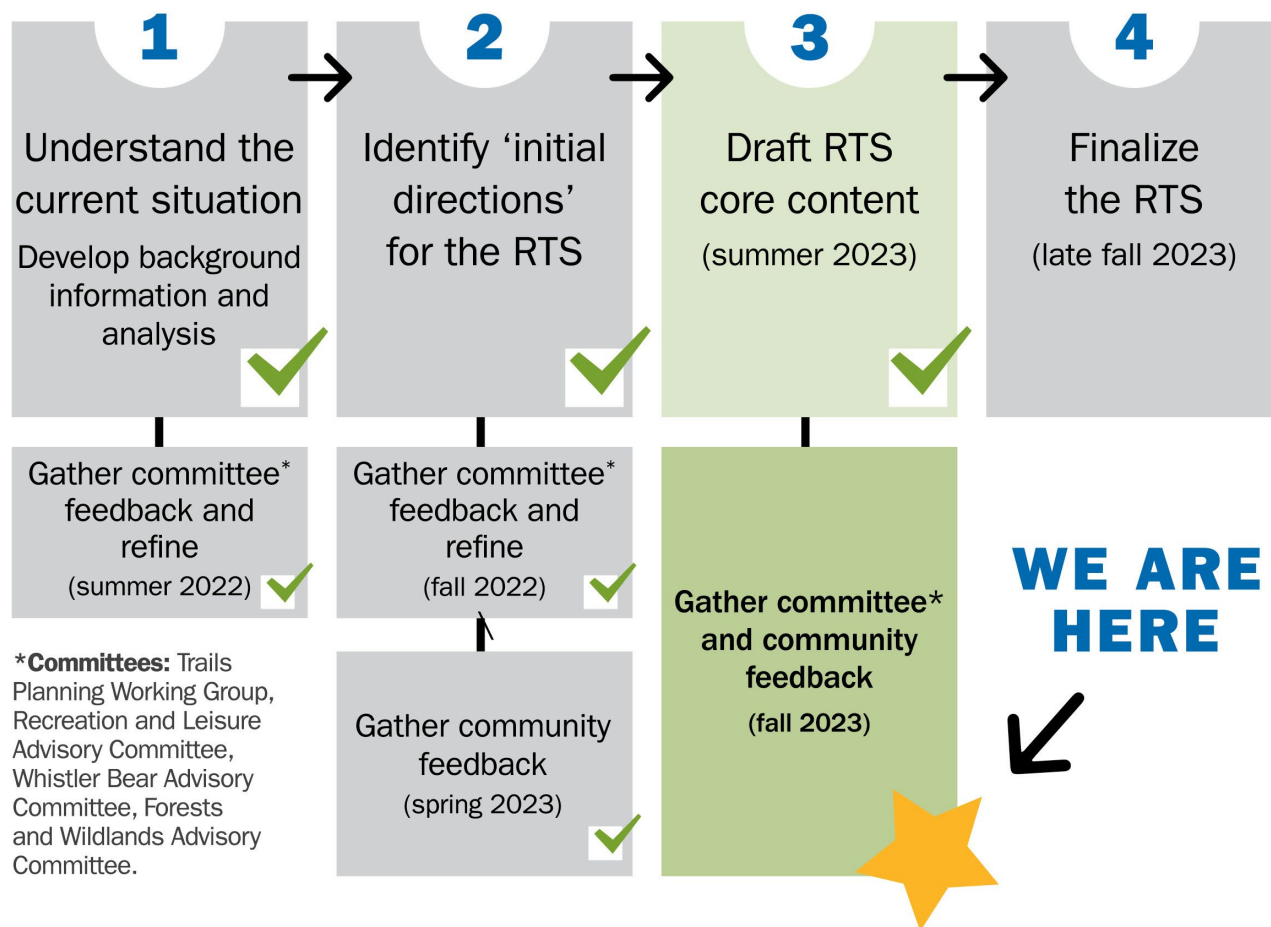
Recreation Trails Strategy Overview

- How we determine most appropriate approach to parking at any given location?
- What is the trail planning, review and approval process for trails located across a variety of land managers?
- How do we determine the right level of commercial and event use across a diverse trail network, and manage it?
- From a trails perspective, how do we determine what is more/less suitable for specific areas?

Trails Master Plan

- Future project
- Build from RTS to identify locational specific gaps and needs in existing trail networks and prioritize improvements
 - Where are new trail staging areas needed, and what scale of facility are they?
 - To encourage active transportation, where are improved trail connectivity from neighbourhoods to trail heads needed?
 - Where could investment in new green and blue level trails go to reduce demands in the pressure on the trails in Lost Lake Park?
 - Where could modification and development of trails for accessible mountain biking and new rider skill development be located?

RTS Development



Draft Core Content – current focus

Trail Areas

1. Brandywine
2. Callaghan
3. Cheakamus
4. Cougar Mountain
5. Lost Lake Park
6. Rainbow/Emerald
7. Westside – Rainbow
8. Westside – Sproatt
9. Whistler North
10. Whistler Valley Bottom
11. Blackcomb CRA and Whistler CRA

For each trail area

- Suitability Analysis
- Recommendations
- Detailed/supporting information

Suitability Analysis & Recommendations

- Based on the area information and detailed background assessments
- Suitability Analysis
 - ✓ High-level guidance
 - ✓ More detailed analysis/planning required for final decision-making
 - ✓ Trail areas identified as
 - LESS suitable for some forms of trail or amenity development
 - MORE suitable for others
- Recommendations: More specific direction provided for each trail area

Community Engagement

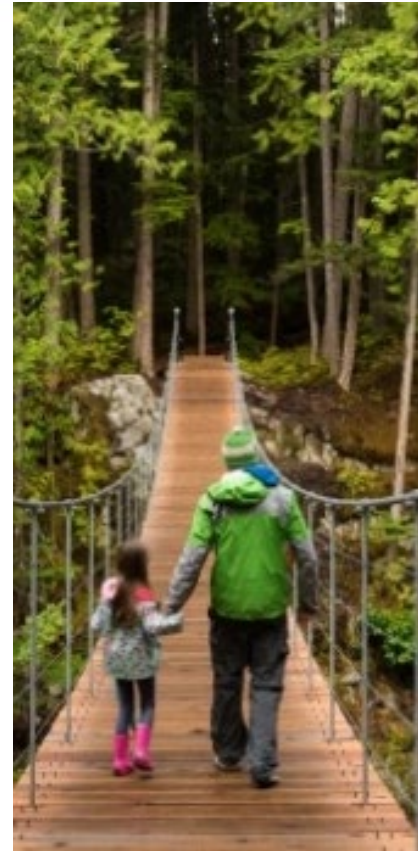
1. Pop-up 'open houses'

- ✓ Monday 2-5pm (Meadow Park)
- ✓ Tues 2:30-5pm (Library)
- ✓ Wed/today 9-11am (Meadow Park)

2. Engage Whistler* – until October 30th

- RMOW's online engagement platform
- engage.whistler.ca

3. Tonight's Q&A session*



Engage Whistler

engage.whistler.ca



- Survey tool
 - 11 trail areas x5 mins
 - Suitability Analysis
 - Recommendations
- Core Content document
 - +Detailed information
- Questions tool
 - Ask us anything about the project or engagement



Recreation Trails Strategy

Overview The RMOW is leading the development of a non-motorized Recreation Trails Strategy that w...

[View Project](#)

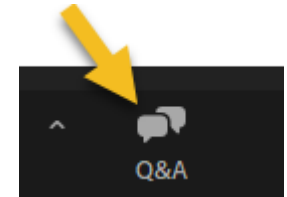
Tonight's Session

Presentation (35 mins)

1. Brandywine
2. Callaghan
3. **Cheakamus**
4. Cougar Mountain
5. **Lost Lake Park**
6. **Rainbow/Emerald**
7. **Westside – Rainbow**
8. **Westside – Sproatt**
9. Whistler North
10. **Blackcomb CRA and Whistler CRA**
11. **Whistler Valley Bottom**

Questions & Answers (30 mins)

- Zoom Q&A tool
 - Ask
 - Upvote
- Qs we can't answer tonight will be answered within a week
 - Engage Whistler, RTS page
 - New PDF document



*Feedback via Engage Whistler SURVEY

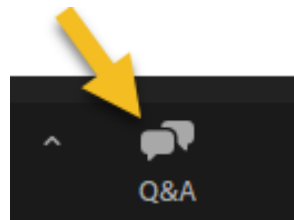
- Add feedback tonight
- Open until Oct 30th

“Additional trails in key habitat areas”

- Repeated in the "LESS suitable for" lists within the suitability analyses
- All trail network areas contain key habitat
- Environmentally responsible trail planning (ERTP) will be undertaken to avoid or mitigate impacts
- RTS recommendation: Develop and apply an ERTP tool moving forward.
- More info: “Environmentally Responsible Trail Planning” document
 - ✓ Engage Whistler – documents list

Q&A

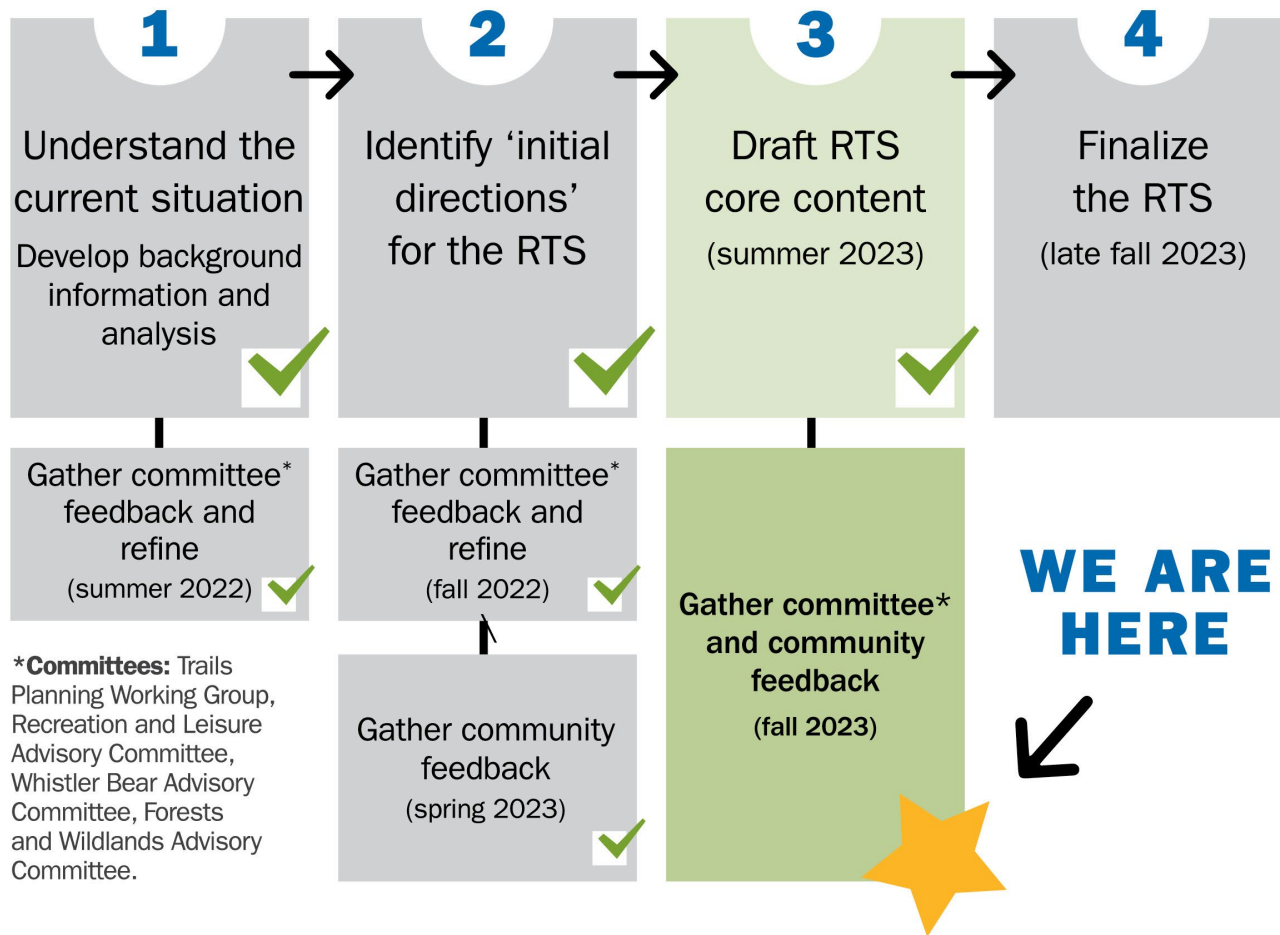
- Submit via Zoom Q&A tool



- Qs we can't answer tonight will be answered within a week
 - Engage Whistler, RTS page
 - New PDF document



Next Steps



A man wearing a black helmet and a grey t-shirt is riding a blue trike on a dirt trail. He is looking towards the camera. In the background, other people on bicycles are visible on the same trail, which is surrounded by lush green trees and foliage. The scene is brightly lit, suggesting a sunny day.

Whistler's Recreation Trails Strategy

A GUIDE FOR DECISION MAKING

Justa Jeskova

Thank you

WHISTLER: A PLACE WHERE OUR COMMUNITY THRIVES, NATURE IS PROTECTED AND GUESTS ARE INSPIRED.